



20 Bellevue Road DROMANA VIC

4  2  2 

SWEEPING VIEWS

Inspect as advertised or by appointment. Call or text Elke on 0423 211 315 or Monica 0416 255 713

Unmistakably coastal, this is a home that evokes relaxation and relishes its elevated position.

Featuring:

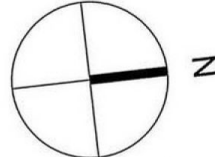
* Charming two-storey home approx. 21.2 sq with mesmerizing views of the beautiful treed countryside as well as of the ever-changing bay and the ships travelling past

* Offering space and flexibility for modern families and their guests with four separate living areas, formal lounge with Open Fire Place

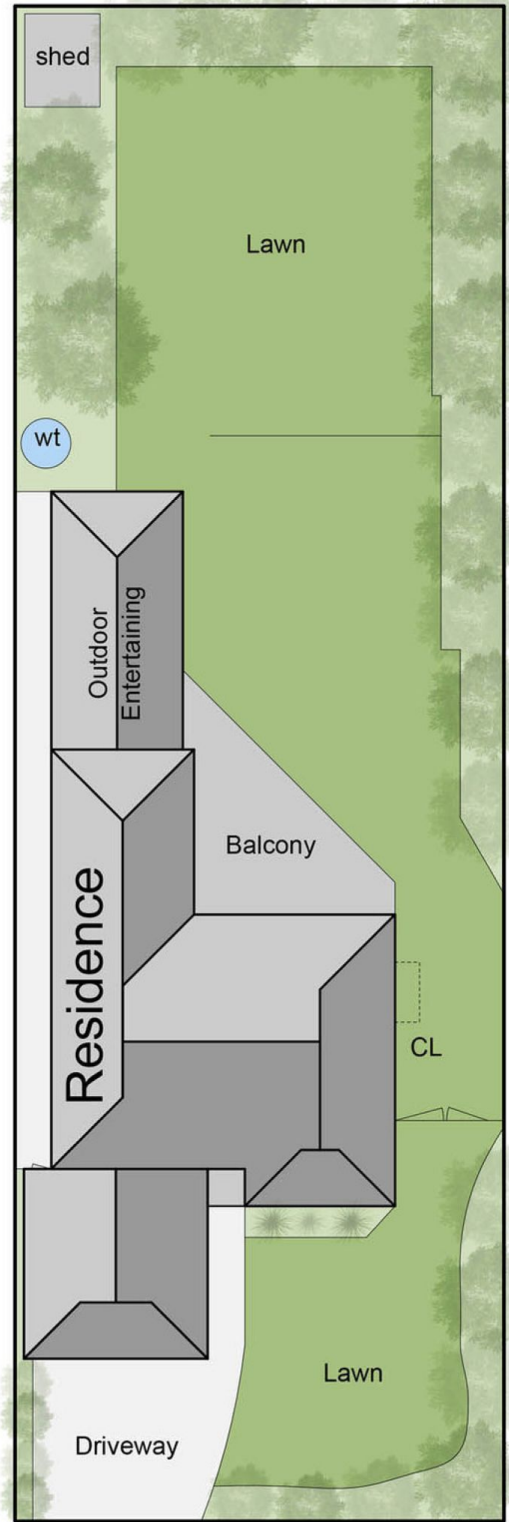
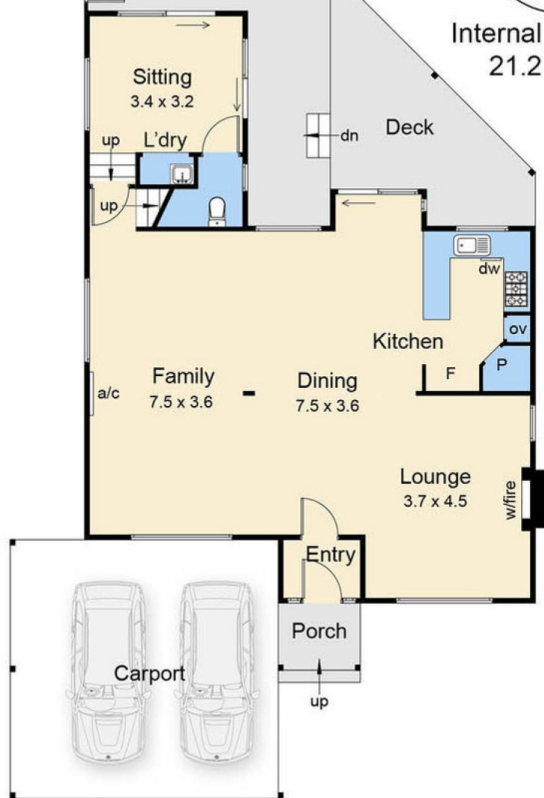
Building Size : 21 sqm
Land Size : 748 sqm
View : <https://www.ypa.com.au/7395236>



Elke Remscheid
0423 211 315



Internal Living Area
 21.2 squares



20 Bellevue Road, Dromana

This floorplan is for illustration purposes only and no warranty is given as to its accuracy. Purchasers are advised to carry out their own investigations. Produced by realtywriters (03) 5970 2222