



13-15 Bruce Street RYE VIC

5  4  3 

QUALITY AND CHARACTER

13 to 15 Bruce Street, Rye - Dual living, 2 dwellings on 1 Title.

Completed in 1989 and situated on 3,828m of land, set in a highly sought after pocket of Rye, this character filled home is unlike any other. A quality home built to last.

THE MAIN HOUSE:

Approx. 36 sq on one level - 3 bedrooms, study, 2 bathrooms, 1 car garage

2 bedrooms have built in robes. The 3rd master bedroom has a walk-in robe, storage shelves, an en-suite with double basins, double shower, toilet and bidet.

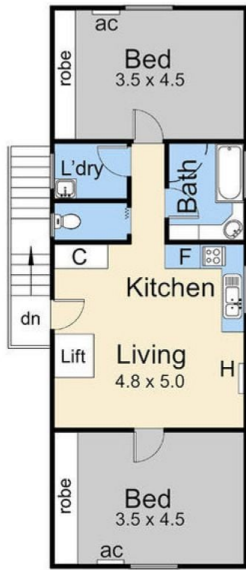
The main bathroom features a shower, corner spa bath,

Land Size : 3828 sqm

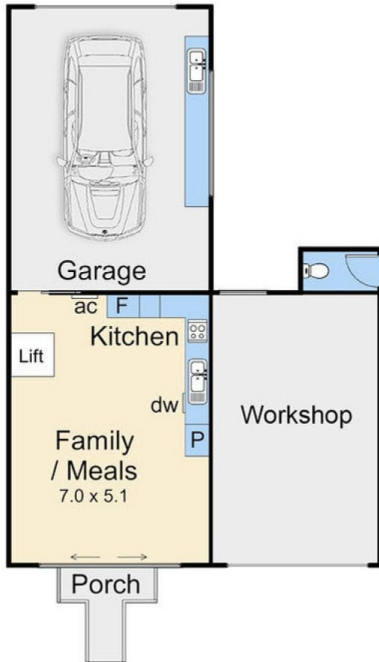
View : <https://www.ypa.com.au/7395235>



Elke Remscheid
0423 211 315



Upper Floor



Lower Floor



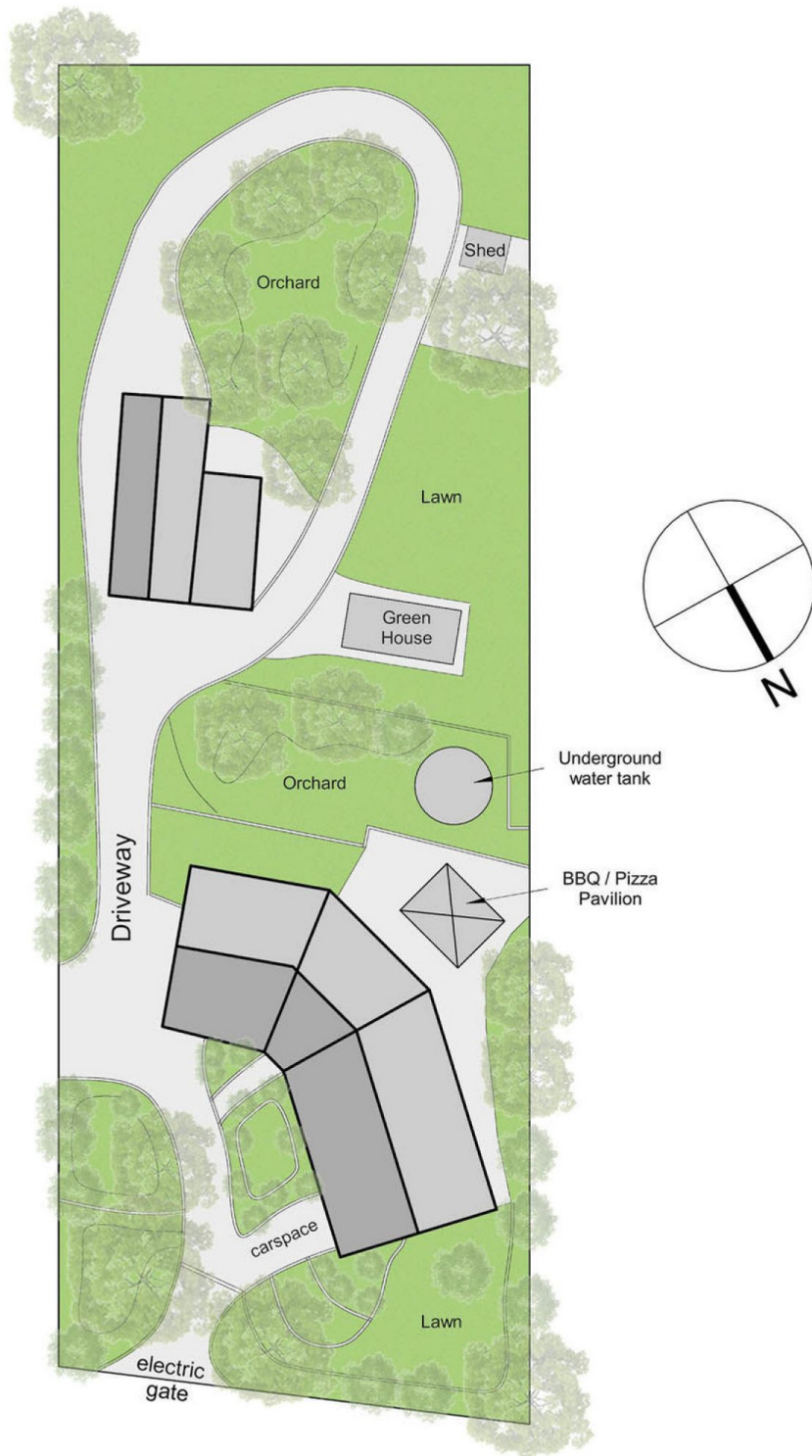
Upper Floor



Lower Floor

13-15 Bruce Street, Rye

This floorplan is for illustration purposes only and no warranty is given to its accuracy. Purchasers are advised to carry out their own investigations. Produced by **realitywriters** (03) 5970 2222



13-15 Bruce Street, Rye

This floorplan is for illustration purposes only and no warranty is given to its accuracy. Purchasers are advised to carry out their own investigations. Produced by **realitywriters** (03) 5970 2222