

## 6 Stationmaster Close Sydenham VIC

3 2 2

### PERFECT LOCATION - PLUS RECENTLY RENOVATED

Situated in a highly sought-after private court location within 15 mins walk to Watergardens Shopping Centre & railway station, 5 mins walk to bus, shops and school. Ideal for the first home buyer or investor.

This Proudly Maintained Family Home comprises:-

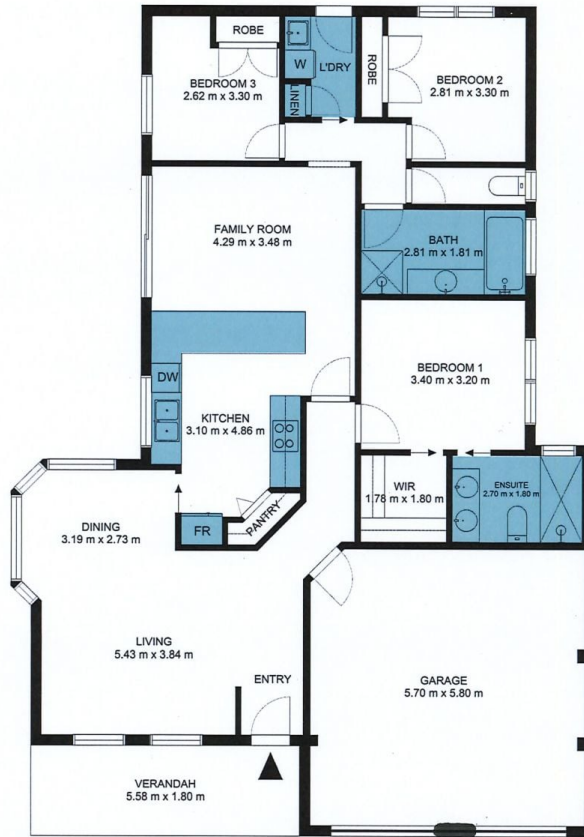
- ? 3 Bedrooms (BIR), master with ensuite & walk in Robe
- ? Spacious loungeroom with excellent natural light
- ? Kitchen with dining area and walk out to large landscaped gardens
- ? Tiled bathroom & sep laundry.
- ? Double lock up garage with entry into home & remote
- ? Ducted heating, evaporative cooling, gas cook top, wall oven, dishwasher and more
- ? Renovated for comfort and easy living

**Land Size** : 581 sqm

**View** : <https://www.ypa.com.au/7395203>



**Joe Albioli**  
0438 133 123



Whilst every attempt has been made to ensure the accuracy of the floor plan contained here, measurements of doors, windows, rooms and any other items are approximate and no responsibility is taken for any error, omission or misstatement. This plan is for illustrative purposes only and should be used as such by any prospective purchaser.