

46 Nicholson Terrace Taylors Hill VIC

4 2 2

OVERLOOKING PARKLAND IN PRIVATE COURT
LOCATION
SPACIOUS LIVING AREAS FOR THE WHOLE FAMILY

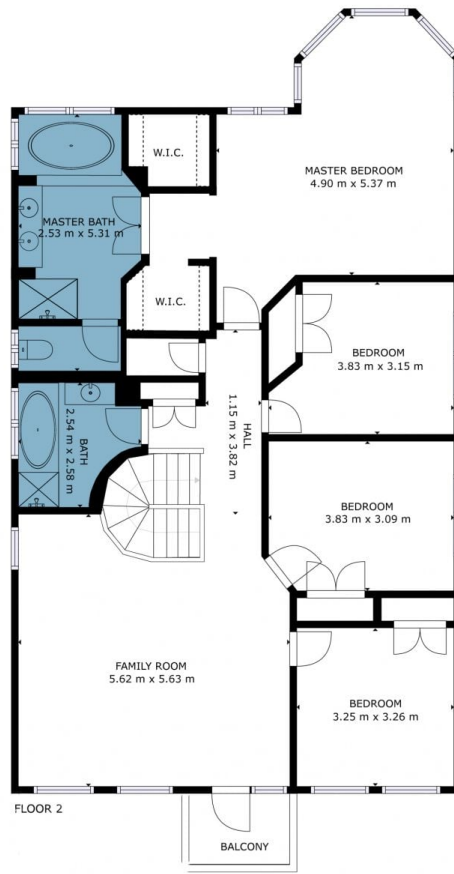
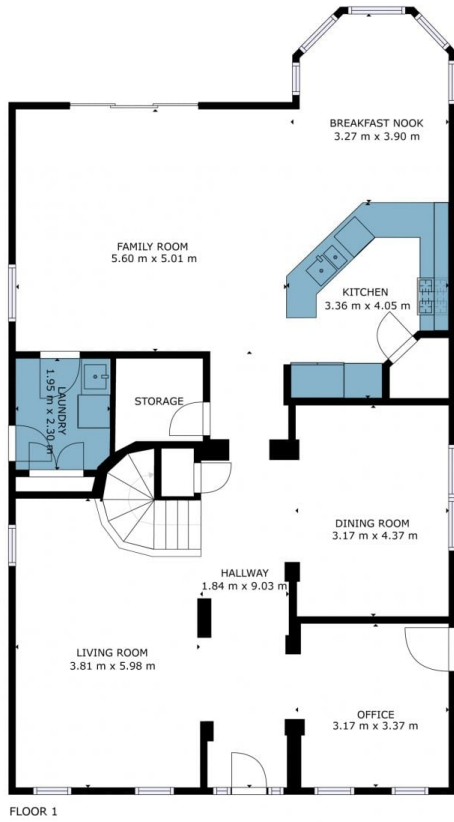
This Large Family Residence Features:-

- ? 4 Bedrooms, large master bedroom with full ensuite & w/w
- ? Upstairs light filled spacious living/retreat area
- ? Large formal lounge room & separate dining room
- ? Office/study at front entry
- ? Spacious day to day family living area overlooking rear gardens
- ? Kitchen with all appliances and good cupboard space
- ? Tiled bathroom, separate powder room and 3 toilets.
- ? Double garage with drive through to rear
- ? Includes ducted heating, new evaporative cooling, gas cooking, wall ovens, dishwasher, ducted vacuum maid, remote garage door and more.

Price : \$ 920,000
Building Size : 38 sqm
Land Size : 681 sqm
View : <https://www.ypa.com.au/7395194>



Joe Albioli
0438 133 123



46 Nicholson Terrace, Hillside

Whilst every attempt has been made to ensure the accuracy of the floor plan contained here, measurements of doors, windows, rooms and any other items are approximate and no responsibility is taken for any error, omission or misstatement. This plan is for illustrative purposes only and should be used as such by any prospective purchaser.