



**28 Solent Crescent Taylors Lakes VIC**

5 🛏 2 🚿 4 🚗

This family home is situated in one of the most convenient pocket of Taylors Lakes with close proximity to schools, Watergardens Shopping Centre, transport, freeway access and parkland views provides everything to offer for the growing family! This quality built home comprises of multiple living areas, a well equipped kitchen with plenty of bench space overlooking meals area. Larger than usual living zones the residence boasts a classic formal lounge, study/5th bedroom, theatre room and a huge rumpus room complete with fully fitted bar, wood heater, split system and access to the covered outdoor entertaining space - the ideal layout for entertaining all year round. Upstairs, four generous bedrooms with BIRs and master with ensuite with double WIRs - plus two retreat areas, a balcony overlooking parklands and main bathroom with spa. Other features include evaporative cooling, gas ducted heating a remote double garage plus the bonus of drive through

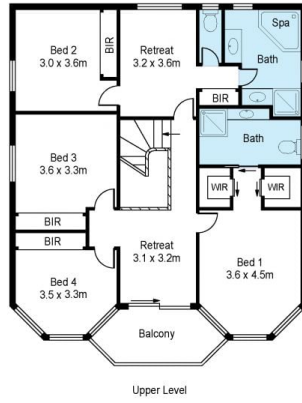
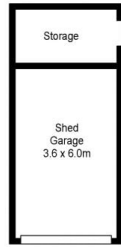
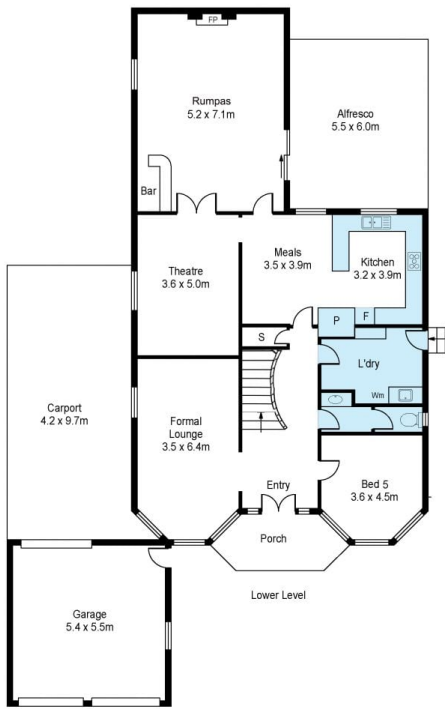
**Price** : \$ 960,000  
**Land Size** : 724 sqm  
**View** : <https://www.ypa.com.au/7395177>



**Peter Colella**  
**0421 346 326**



**Monique Cukavac**  
**0449624617**



Scale in metres. Indicative only. Dimensions are approximate. All information contained herein is gathered from sources we believe to be reliable. However we cannot guarantee its accuracy and interested persons should rely on their own enquiries

## 28 Solent Crescent, Taylors Lakes