



## 4 Pulsar Way Fraser Rise VIC

4 🛏 2 🚿 2 🚗

### Functional Family Living

A multitude of easy living spaces that offer unique character and charm. With high ceilings and quality fittings and finishings, the family-friendly layout of this Carlisle home will give you carefree comfort and relaxed living.

A flexible and easy floor plan offering a front-facing master bedroom with walk-in robe and a private ensuite. With an additional three bedrooms plus bathroom, formal living & kids retreat this opulent floor-plan ensures the needs of the modern family. The main feature of this home is the huge open plan living area boasting a seamless connection to the large kitchen overlooking the meals & family living with a unique alfresco which can be fully enclosed to provide the ultimate indoor & outdoor family hub.

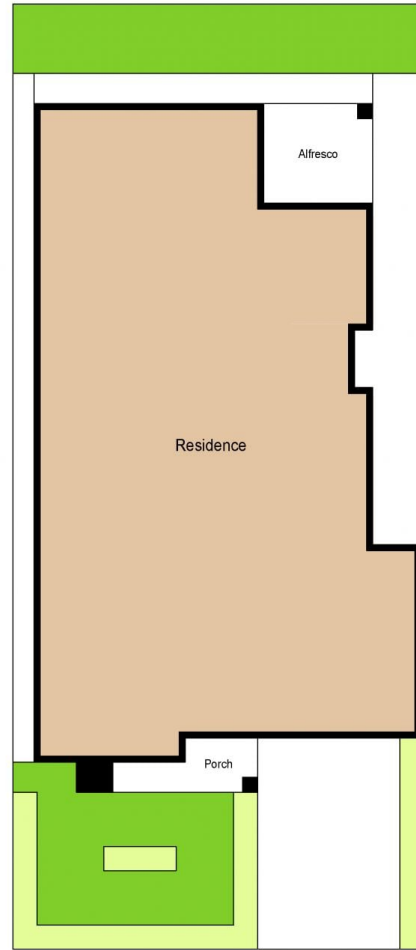
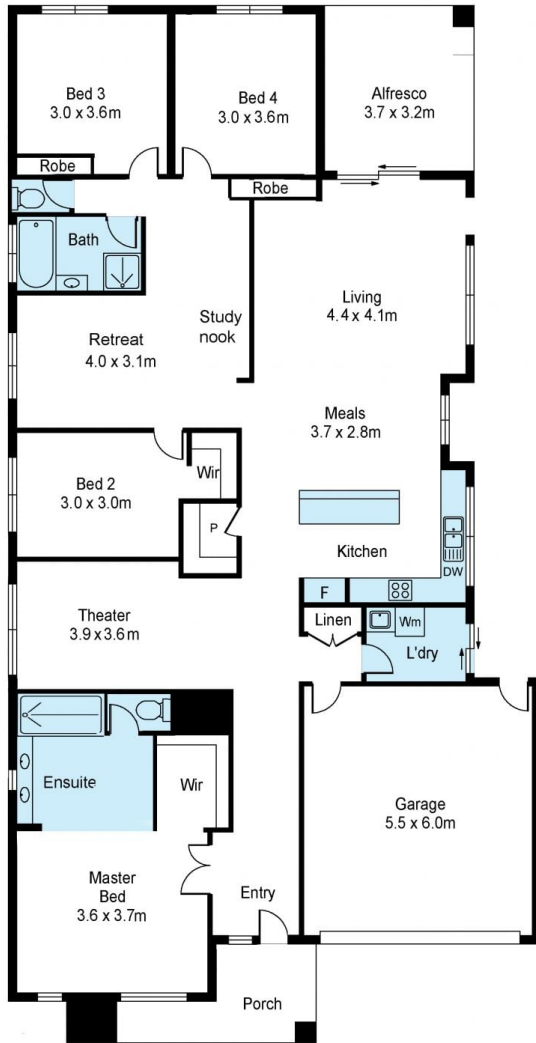
**Price** : \$ 775,000  
**Land Size** : 400 sqm  
**View** : <https://www.ypa.com.au/7395160>



**Peter Colella**  
0421 346 326



**Monique Cukavac**  
0449624617



Scale in metres. Indicative only. Dimensions are approximate. All information contained herein is gathered from sources we believe to be reliable. However we cannot guarantee its accuracy and interested persons should rely on their own enquiries.

## 4 Pulsar Way, Fraser Rise

