



## 1 Greybox Court Hillside VIC

4 3 2

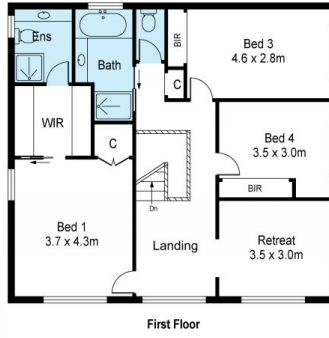
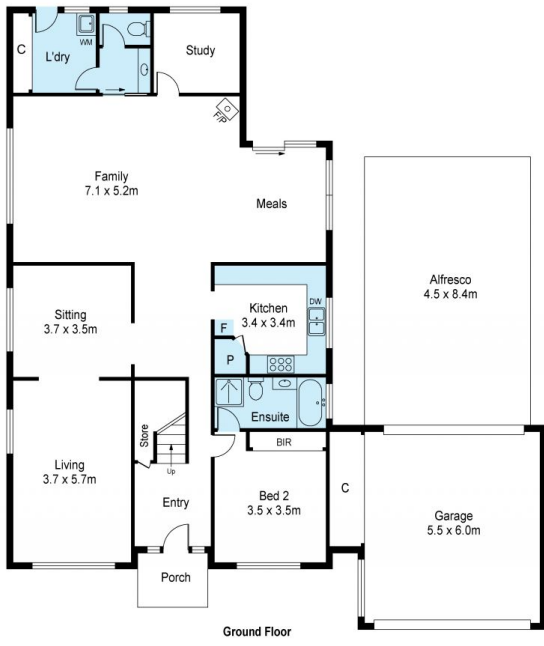
Perfectly positioned and a whole lot to offer..

This well accommodating double storey home is perfectly positioned for the growing family in the ever popular Bellevue Estate. Maximising style, comfort and elegance, the ground floor features formal living and dining rooms, well-appointed kitchen overlooking a light-filled family room, study & service by a guest bedroom downstairs complete with ensuite & built in robes. Step outside to the undercover entertainment area, sun deck & beautiful landscaped gardens. Upstairs comprises with a retreat area & 3 fitted bedrooms serviced by central bathroom, the main with WIR and ensuite. Additional features include gas ducted heating & evaporative cooling & double remote garage with drive through access all on some 735m<sup>2</sup> of land. Close to bus service, shopping facilities, parks and major roads.

**Price** : \$ 940,000  
**Land Size** : 735 sqm  
**View** : <https://www.ypa.com.au/7395130>



**Peter Colella**  
0421 346 326



Scale in metres. Indicative only. Dimensions are approximate. All information contained herein is gathered from sources we believe to be reliable. However we cannot guarantee its accuracy and interested persons should rely on their own enquiries

Site Plan Not To Scale



# 1 Greybox Court, Hillside