



32 Botanic Drive Hillside VIC

3  2  2 

This family home comprises of 3 Bedrooms, Multiple living zones and much more. If you are in the market for your first home then this stunning home could be the one.

As you enter the home you instantly notice the quality of floorboards, high ceilings and cleanliness these vendors have maintained and upkept.

The Master Bedroom is large in size and is equipped with a large en-suite including, shower, spa and toilet as well as 3 built in robes. The remaining bedrooms are all large in size with built in robes.

As you enter the home you instantly notice the first living zone as well as an open area perfect for a study.

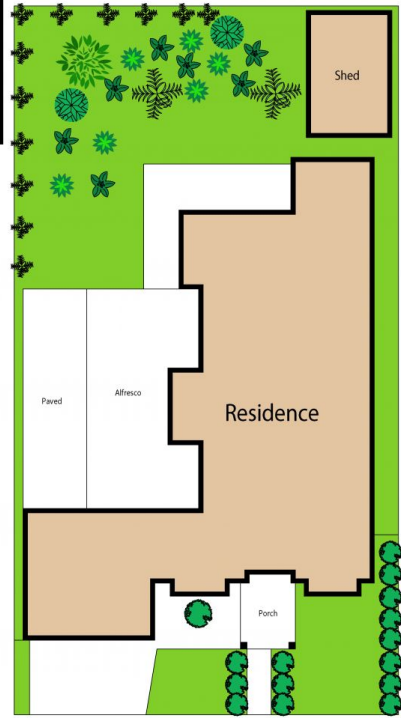
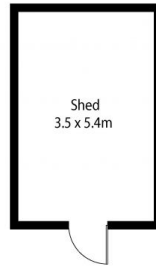
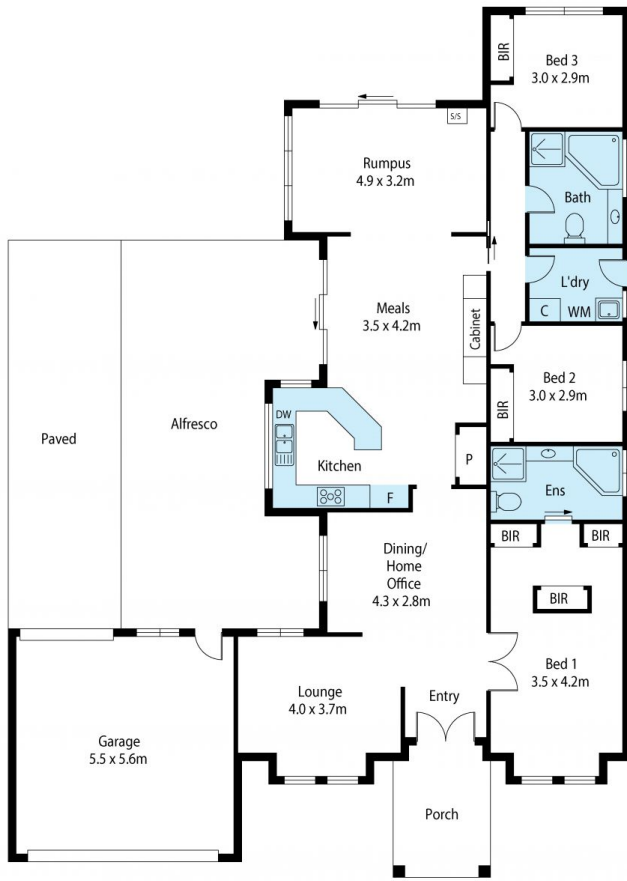
Commencing through the hallway you enter the kitchen and

Price : \$ 755,000

View : <https://www.ypa.com.au/7395110>



Peter Colella
0421 346 326



Site Plan
(Not to scale)



Scale in metres. Indicative only. Dimensions are approximate. All information contained herein is gathered from sources we believe to be reliable. However we cannot guarantee its accuracy and interested persons should rely on their own enquiries.



32 Botanic Drive, Hillside