



## 25 Wattletree Drive Taylors Hill VIC

3 2 2

Perfectly positioned in Taylors Hill sits this immaculately presented family home with a versatile and spacious floorplan with enough room for any growing family. The home creates a fantastic environment for entertaining all year round.

A perfect investment where you will find Taylors Hill Village and public transport within walking distance and Caroline Springs Square as well as Watergardens Town Centre a short drive away.

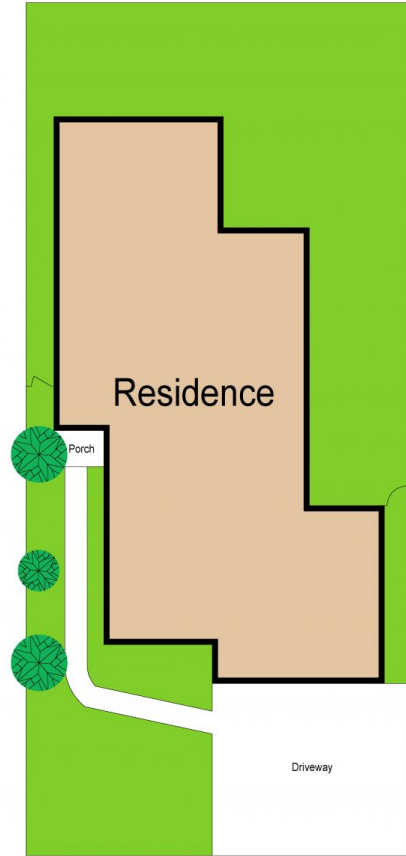
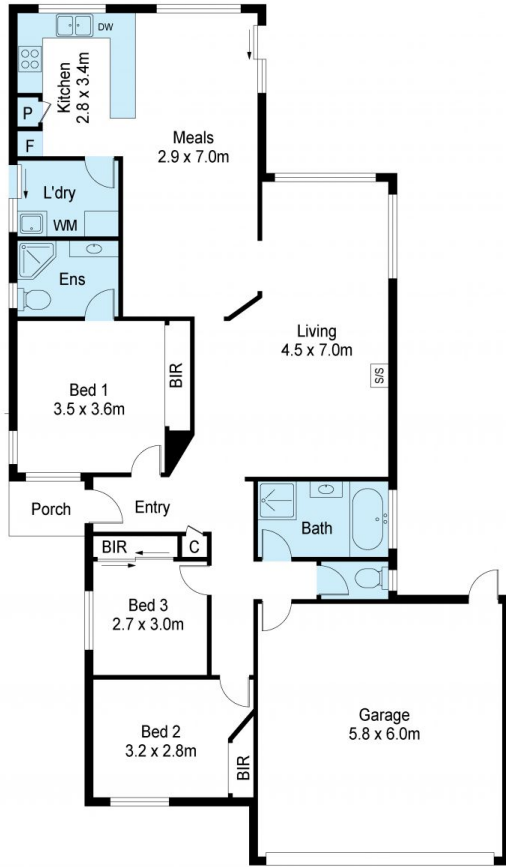
Upon entry you will notice the large first living zone. At the rear of the home you will find yourself in the open plan Kitchen and Dining area with an adjoining living zone creating the open plan feeling.

The kitchen is equipped with stainless steel appliances,

**Price** : \$ 530,000  
**Land Size** : 358 sqm  
**View** : <https://www.ypa.com.au/7395109>



**Peter Colella**  
0421 346 326



Site Plan  
(Not to scale)

Scale in metres Indicative only. Dimensions are approximate. All information contained herein is gathered from sources we believe to be reliable. However we cannot guarantee its accuracy and interested persons should rely on their own enquiries



25 Wattletree Drive, Taylors Hill