



11 Wattletree Drive Taylors Hill VIC

3 2 2

This beautifully appointed residence showcases designer style throughout with light filled living spaces with an innovative design. Focusing on optimum privacy, space and easy care in/outdoor living, it makes an exceptional home for the entertainer.

The living areas and all bedrooms are spacious and contemporary; the kitchen features quality appliances, huge bench space and plenty of storage. Immaculately presented and with an abundance of natural light, this striking home features plenty of space for your family without compromising on style.

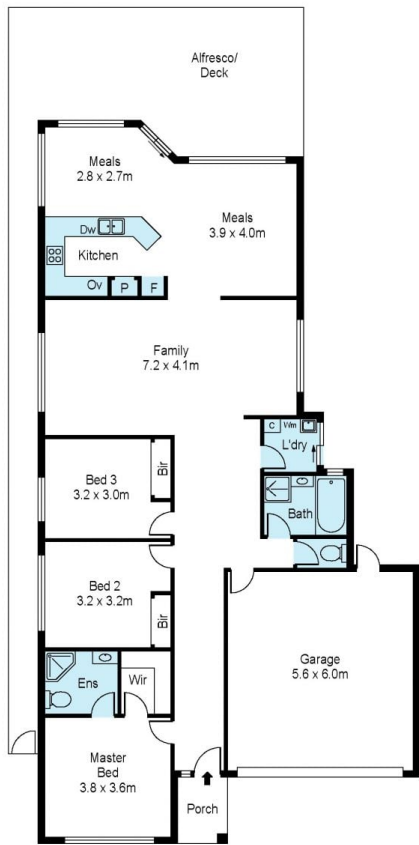
Located in a quiet neighbourhood, this fabulous home enjoys a great size block ideal for entertaining overlooking a large under cover alfresco area and double garage. Positioned within easy distance to schools and close to all amenities and walking distance to the Parklands, this appealing home has so much to offer.

Price : \$ 570,000

View : <https://www.ypa.com.au/7395062>



Nancy Crupi
0413 969 284



Scale in metres. Indicative only. Dimensions are approximate. All information contained herein is gathered from sources we believe to be reliable. However we cannot guarantee its accuracy and interested persons should rely on their own enquiries.



11 Wattletree Drive, Taylors Hill