



## 45 Wattleree Drive Taylors Hill VIC

3  2  2 

A fantastic starter home in a vibrant community - its ideally positioned close to excellent facilities such as public transport, restaurants schools & Watergardens Shopping Centre.

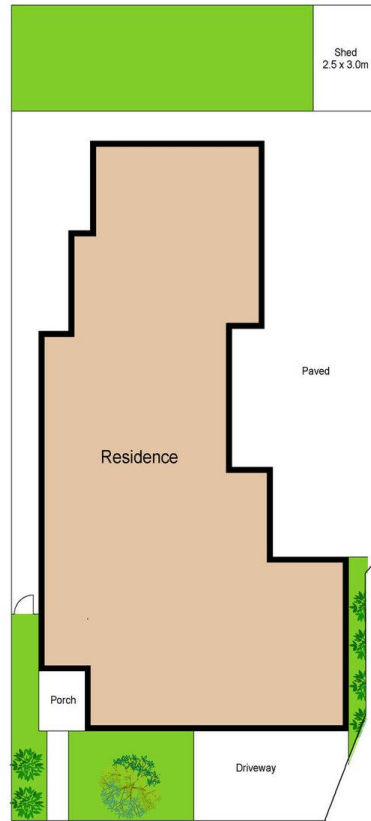
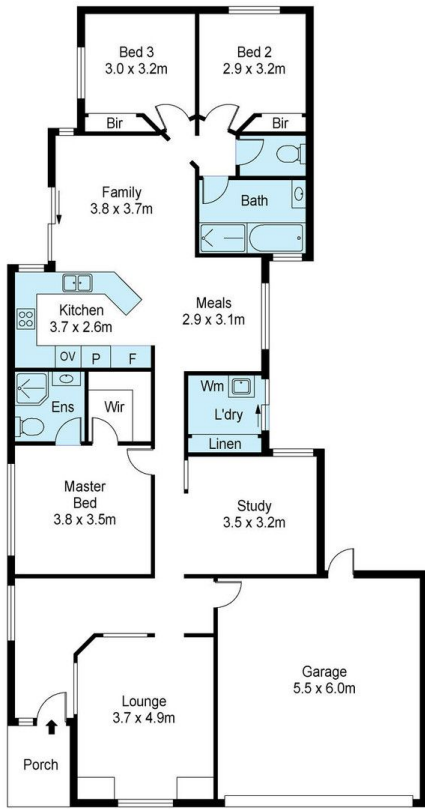
**Price** : \$ 551,000

**View** : <https://www.ypa.com.au/7394921>

Comprising of 3 comfortable-sized robed bedrooms, 2 bathrooms and a free-flowing floorplan making it a savvy buying opportunity for couples, growing families or investors in a popular residential pocket.

A wonderful layout including a large formal lounge area upon entrance, which flows perfectly through to a 2nd living precinct with an open-plan meals area and a superb kitchen. The kitchen is nicely appoi, dishwasher & stainless steel

Other features include ducted heating, evaporative cooling, high ceilings, , 2-car garage with internal &



Scale in metres. Indicative only. Dimensions are approximate. All information contained herein is gathered from sources we believe to be reliable. However we cannot guarantee its accuracy and interested persons should rely on their own enquiries



## 45 Wattletree Drive, Taylors Hill