



## 11 Maple Court TAYLORS HILL VIC

3  2  2 

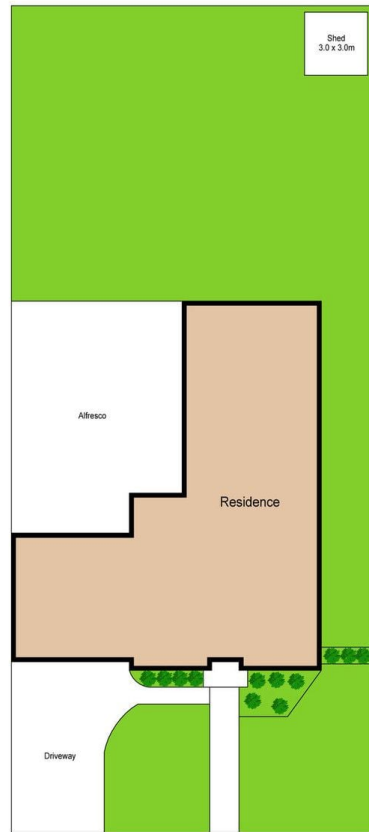
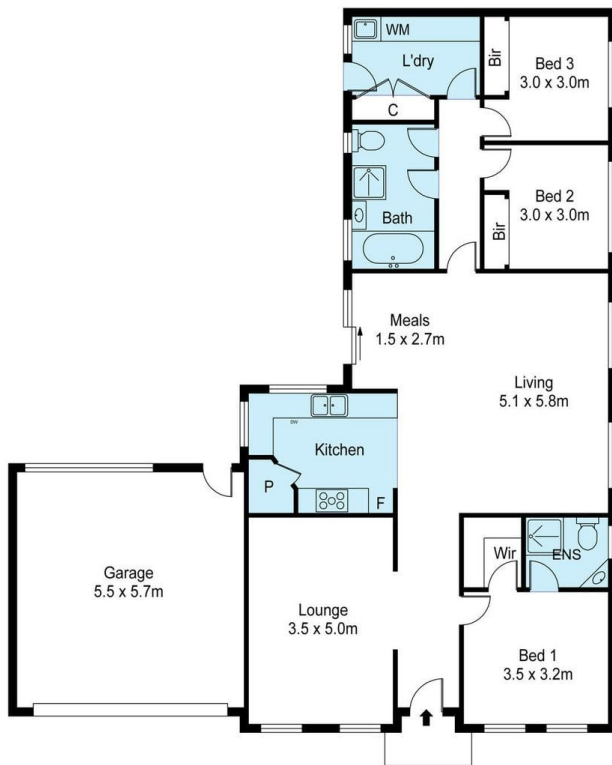
Situated in a fantastic pocket of Taylors Hill, and positioned perfect in a prime and quiet location is this fantastic home that offers a flowing floor plan on a generous block size of 655m2(approx)

**View** : <https://www.ypa.com.au/7394914>

Perfect for first home buyers looking to break into the booming Taylors Hill market, savvy investors or downsizers. Located just minutes away from Primary schools, High schools, Watergardens Shopping Centre and Aqua Gardens, Public transport and much more.

The property is equipped with 3 Bedrooms, Master including en-suite and walk in robe. The remaining bedrooms are equipped with built in robes. A second and spacious bathroom services the rest of the home.

As you enter you are instantly greeted to the first of multiple



Scale in metres. Indicative only. Dimensions are approximate. All information contained herein is gathered from sources we believe to be reliable. However we cannot guarantee its accuracy and interested persons should rely on their own enquiries



# 11 Maple Crt Taylors Hill