



2A Orchid Square SYDENHAM VIC

4 2 1

Situated in the most convenient location close to local schools, parklands, public transport and only 10 minute walk to Watergardens Shopping Centre and train station sits this spacious family home!

Land Size : 327 sqm

View : <https://www.ypa.com.au/7394878>

Internally featuring:

- 3 bedrooms plus study/optional 4th bedroom
- Massive master bedroom with ensuite & WIR
- 2 full bathrooms
- Separate living areas inc. front lounge & rear family area
- Bright kitchen adjoining meals area
- Ducted heating
- Evaporative cooling
- Porcelain tiles

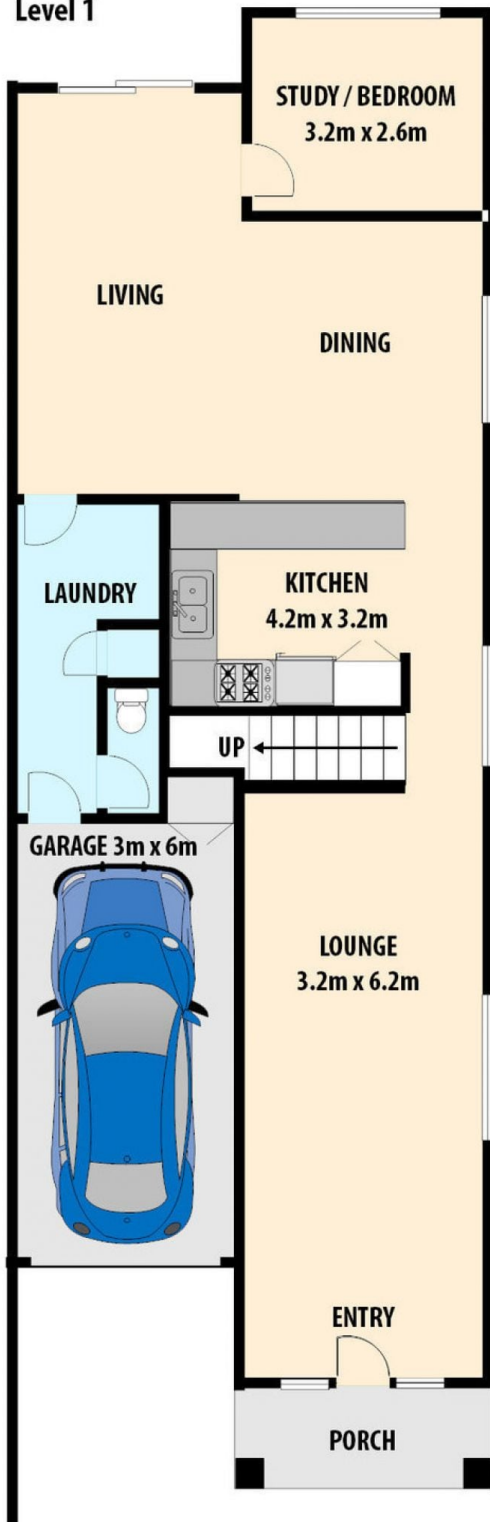


Kayla Ridolfi
0421 866 494

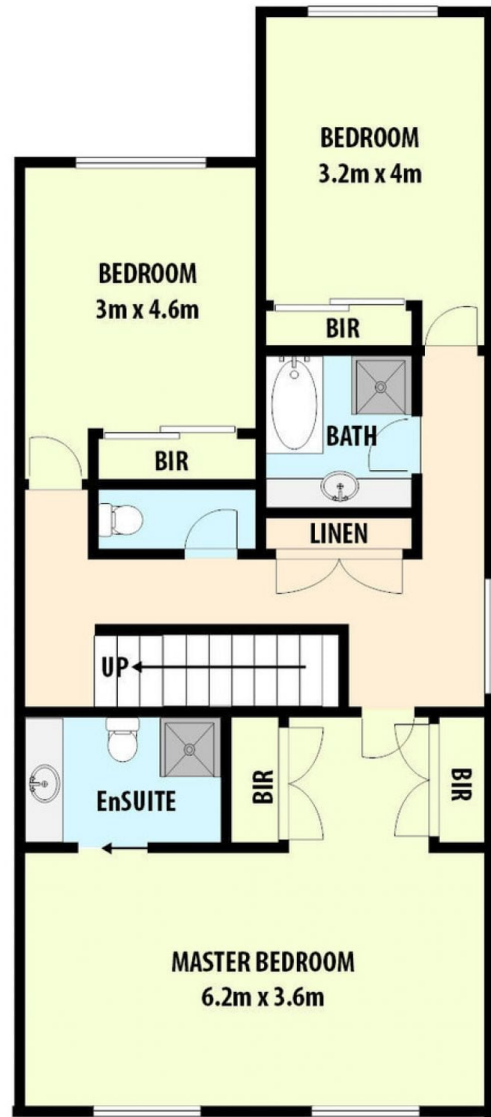
Externally featuring:

- Single garage with internal access into the laundry

Level 1



Level 2



2a ORCHID SQUARE, SYDENHAM

All data and dimensions shown in this sketch are approximate.