



## 187 Copernicus Way KEILOR DOWNS VIC

5 4 3

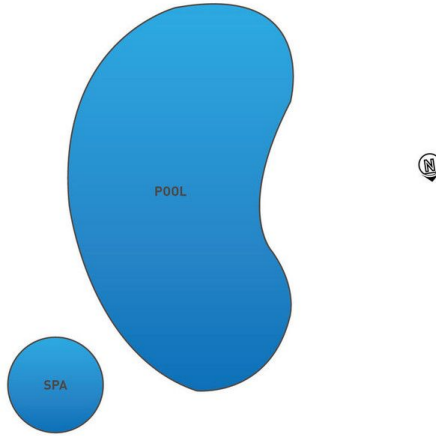
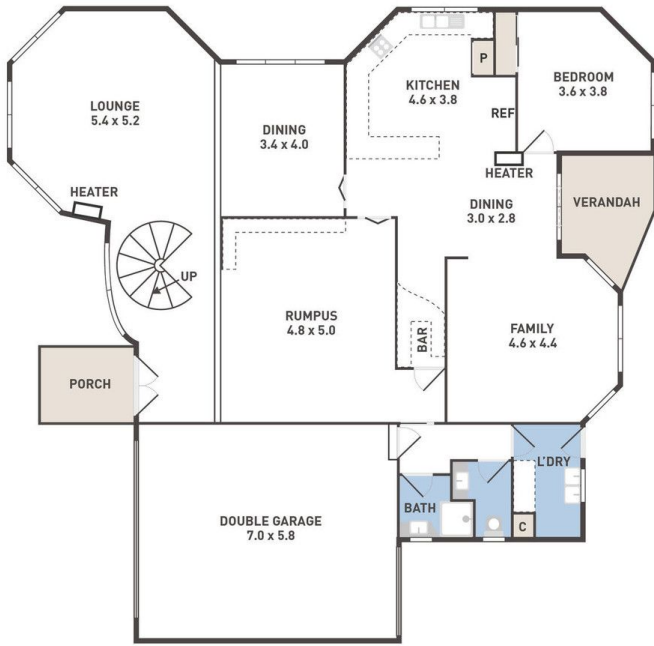
This superbly constructed double storey home stands proud in one of Keilor Downs most popular areas, close to Watergardens Shopping Centre, public transport and leading schools.

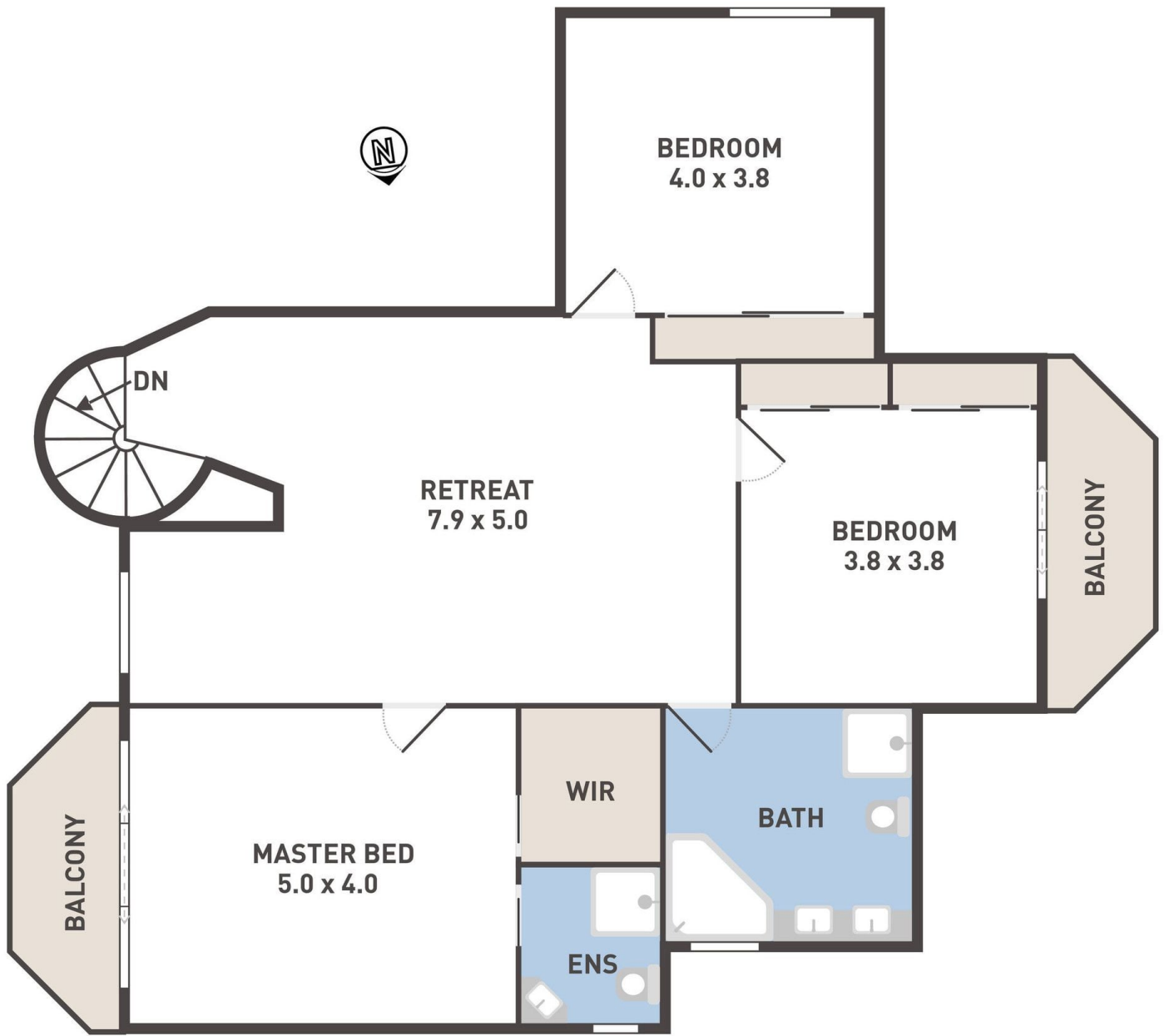
View : <https://www.ypa.com.au/7394857>

- \*East facing property.
- \*Horseshoe driveway with an abundance of off-street parking.
- \*Comprising 4 spacious bedrooms & 3 bathrooms.
- \*Huge master suite with ensuite, walk in robe & balcony.
- \*Generous front formal lounge with wood fireplace complemented with a spiral staircase.
- \*Spacious upstairs retreat.
- \*Large kitchen with quality appliances & abundance of bench space and storage.
- \*Adjoining meals & dining areas plus large family area with separate rumpus.



**Peter Colella**  
0421 346 326





FIRST FLOOR