



26 Goulding Drive PLUMPTON VIC

4  3  2 

Flawlessly designed and built to the highest standard, this owner built luxury home offers growing families or investors an amazing opportunity for maximum functionality and comfort.

Land Size : 392 sqm

View : <https://www.ypa.com.au/7394746>

Four bedrooms, two master bedrooms with walk-in-robos and ensuites, all other bedrooms with built -in-robos.

Chefs kitchen with stone bench tops, quality stainless steel appliances, walk-in pantry, dishwasher and built in fridge.

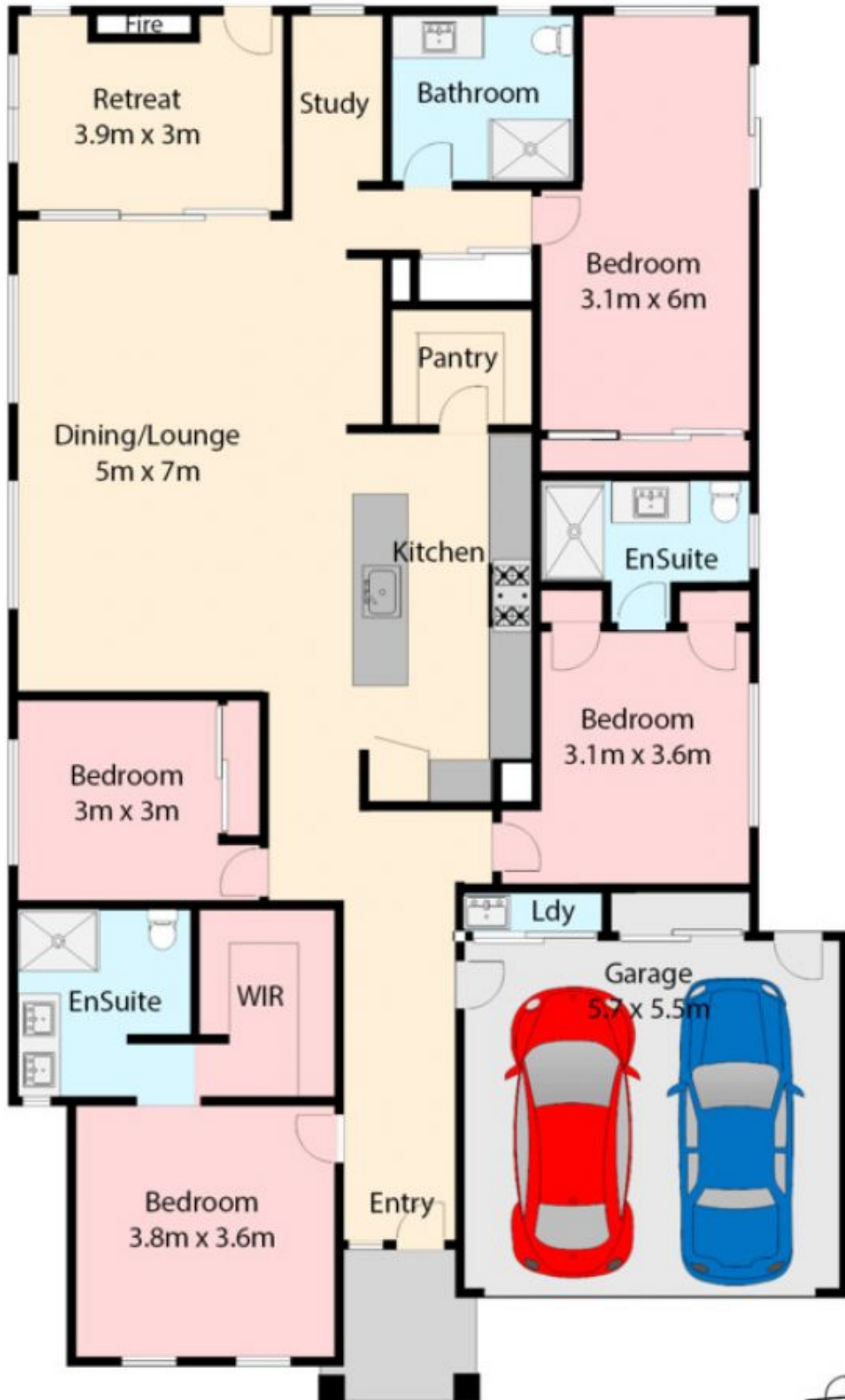
Large open plan meals & family area with quality floor tiles which underline the elegance of the living spaces.

Also featuring an abundance of storage, high ceilings throughout, gas ducted heating, evaporative cooling, double remote garage with internal access, low maintenance backyard and still under the builder's warranty

All located within a short distance to all the local amenities,



Nancy Crupi
0413 969 284



26 Goulding Drive, Plumpton

All dimensions and data in this sketch are approximate