

**32 Nicholson Terrace Taylors Hill VIC**

4  2  2 

WHEN SIZE COUNTS YOU MUST INSPECT THIS FAMILY HOME

OVER 40 SQUARE OF LIVING AREA

Situated in a Prime Location this Family Home Features:-  
? 4 Bedrooms, master with full ensuite, spa, wir & Upstairs parents retreat  
? Formal Loungeroom, separate diningroom  
? Office/study or extra bedroom  
? Large day to day family living area overlooking rear gardens  
? Kitchen with modern appliances, pantry and good cupboard space  
? Tiled bathroom, separate powder room and 3 toilets.  
? Double garage, excellent access for truck, caravan or trailer. Land 732m2

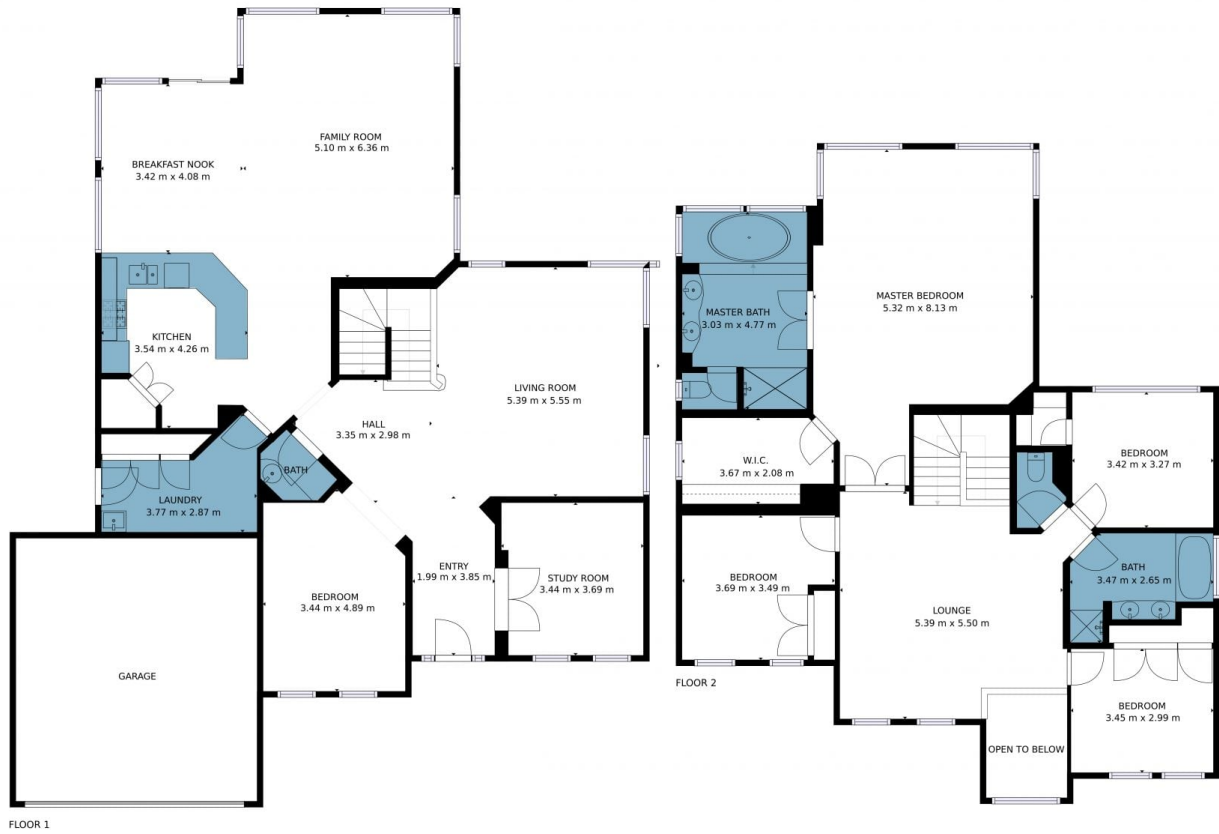
**Price** : \$ 877,500

**Land Size** : 732 sqm

**View** : <https://www.ypa.com.au/7393599>



**Joe Albioli**  
**0438 133 123**



## 32 Nickolson Terrace, Taylor's Hill

Whilst every attempt has been made to ensure the accuracy of the floor plan contained here, measurements of doors, windows, rooms and any other items are approximate and no responsibility is taken for any error, omission or misstatement. This plan is for illustrative purposes only and should be used as such by any prospective purchaser.