



2 Hillside Avenue Dromana VIC

4 2 2

Having stood the test of time for over half a century, and lending a sympathetic nod to Art Deco design, this breathtaking example of fine Australian architecture has successfully pushed the boundaries between modern living and old world charm to create a space that is both spectacular and mesmerizing.

An original 'Commonwealth bank Home' constructed in 1956 from a mix of weatherboard and brick materials, this absolutely magnificent property has since undergone an extensive transformation with a full renovation having been completed in 2011.

With absolute meticulous attention to detail and no expense spared, the beautifully updated interiors shine through a long list of one of a kind custom features including original Art Deco ceiling roses, cornice, skirting and architraves, Wormy Chestnut hardwood flooring, Maffra stone rockwork, custom Sydney Blue Gum mantle,

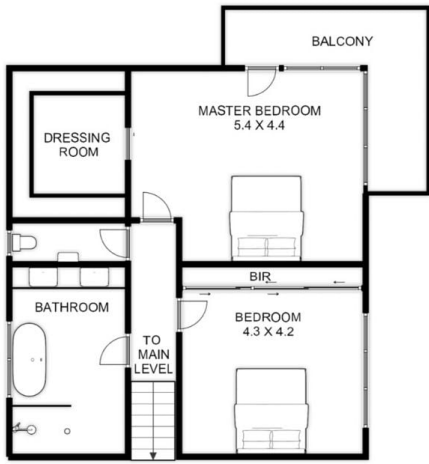
Price : \$ 1,600,000
Land Size : 997 sqm
View : <https://www.ypa.com.au/7393592>



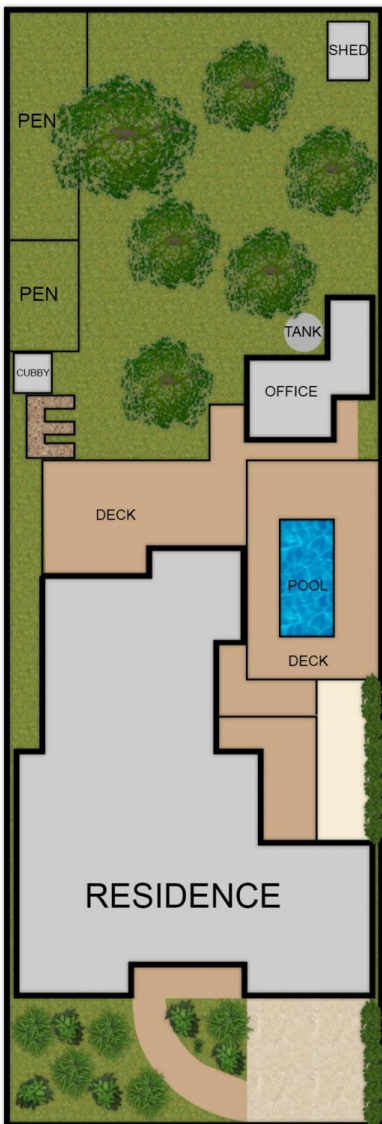
Will Likendey
0448 785 744



Tony Talarico
0420 778 401



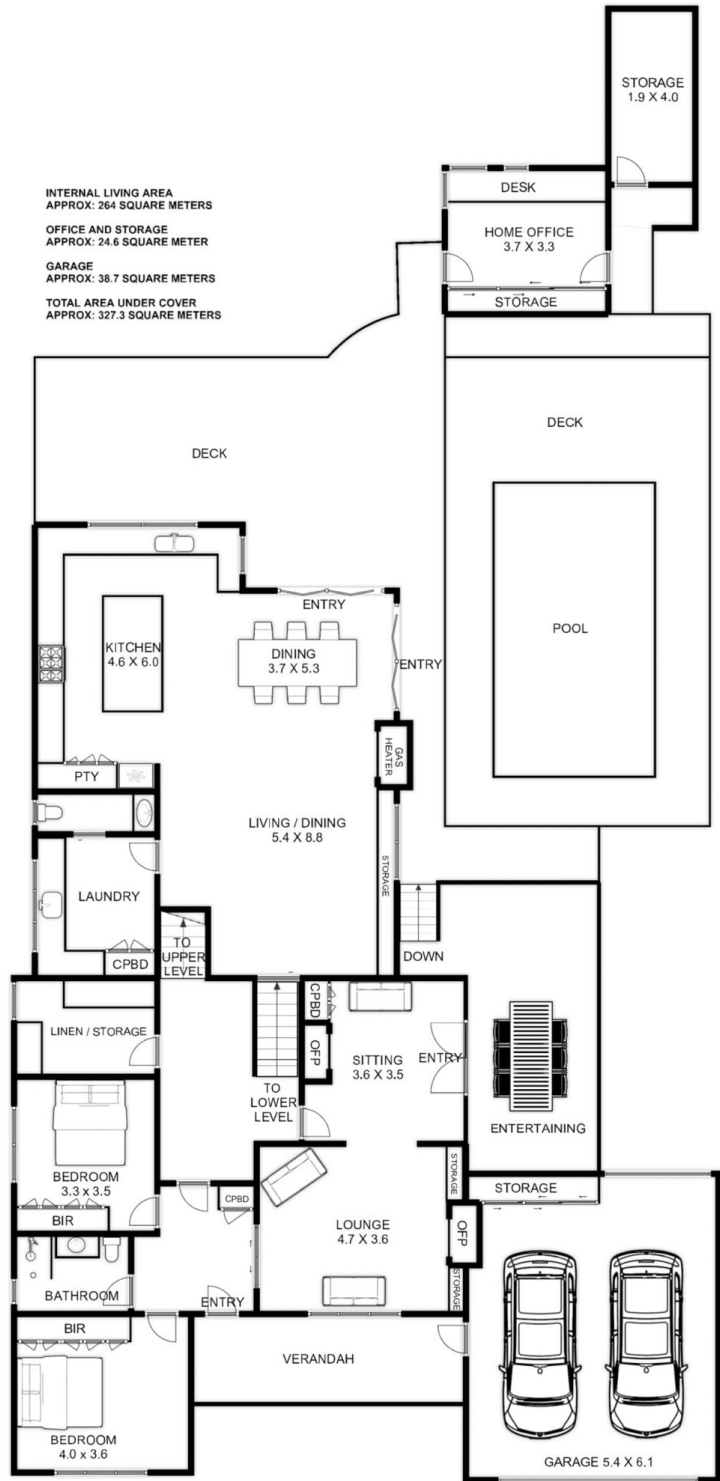
UPPER LEVEL



SITE

2 HILLSIDE AVENUE DROMANA

INTERNAL LIVING AREA
APPROX: 264 SQUARE METERS
OFFICE AND STORAGE
APPROX: 24.6 SQUARE METER
GARAGE
APPROX: 38.7 SQUARE METERS
TOTAL AREA UNDER COVER
APPROX: 327.3 SQUARE METERS



MAIN AND LOWER LEVEL

This is an artistic representation. All measurements, dimensions and illustrated areas are approximate. It is the responsibility of all interested parties to verify all data depicted and omitted.