



63 Elizabeth Avenue Capel Sound VIC

3  2  2 

This seven year old, meticulously cared for brick veneer home with minimal maintenance gardens is set on a carefree block of 450*m2 and is located just minutes to the sea.

Comprising three lovely bedrooms (all with built in robes), including a generous primary bedroom with walk in robe and ensuite, the home also offers a bright, open plan kitchen/meals/living area that leads directly out onto a private courtyard which attracts beautiful native birdlife from the wetlands opposite the property.

Modern features include an electric ceramic cooktop, oven, slide out range, reverse cycle air conditioning, double lock up garage with internal access and coloured concrete drive and pathway that extends the entire perimeter of the home.

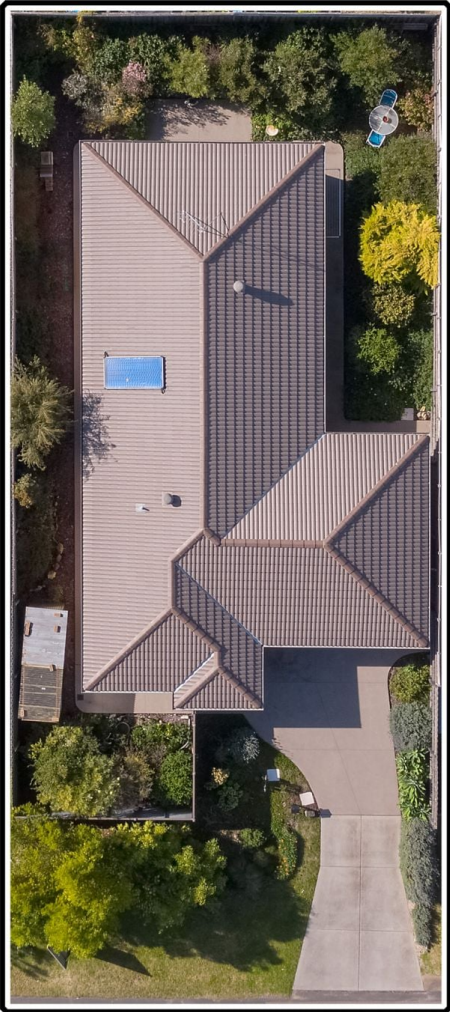
Price : \$ 805,000
Land Size : 450 sqm
View : <https://www.ypa.com.au/7393569>



Will Likendey
0448 785 744



Tony Talarico
0420 778 401



SITE

INTERNAL LIVING AREA
APPROX: 111 SQUARE METERS

GARAGE AND PORCH
APPROX: 37.9 SQUARE METERS

TOTAL AREA
APPROX: 18.3 SQUARE METERS

RESIDENCE

63 ELIZABETH AVE CAPEL SOUND

This is an artistic representation. All measurements, dimensions and illustrated areas are approximate. It is the responsibility of all interested parties to verify all data depicted and omitted.