



42 Nautilus Street Rye VIC

3  1  1 

Call Will for a private inspection

Located in a much sought after, quiet & leafy pocket of Rye, this beautiful three bedroom family home soars above the treetops and offers a magical opportunity to own your very own slice of the Mornington Peninsula.

With vistas out across Arthurs Seat, Red Hill, and the hinterland beyond, from this elevated position you are afforded breathtaking landscape views and as well as the best seat in the house to watch the morning sun break across the horizon.

Offering fully landscaped grounds including crushed rock pathways and stairs, extensive retaining walls and a level parcel of land at the very top of the block - the perfect space for an art studio, guest cottage or pool (all STCA) - this incredible property has it all.

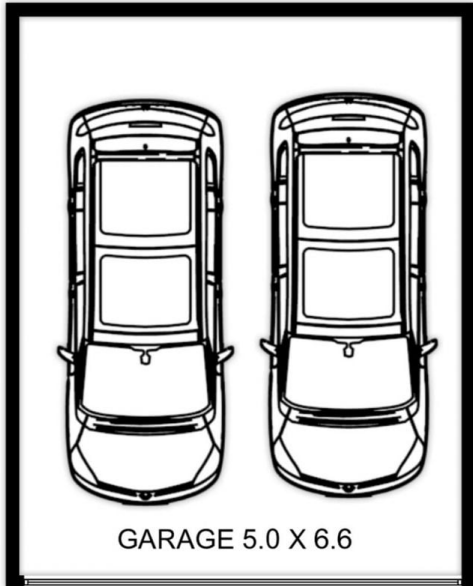
Price : \$ 900,000

Land Size : 1021 sqm

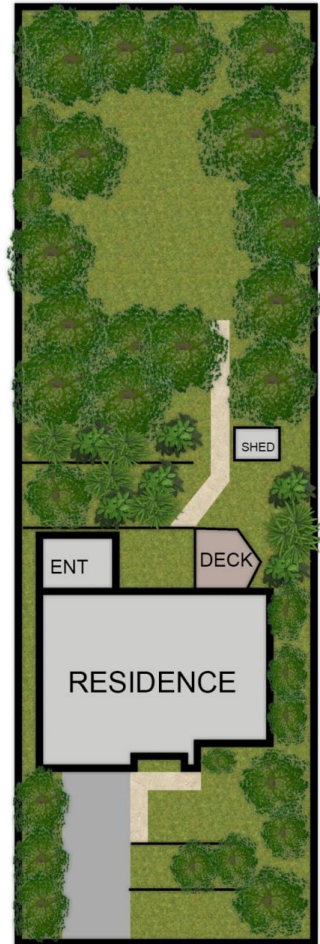
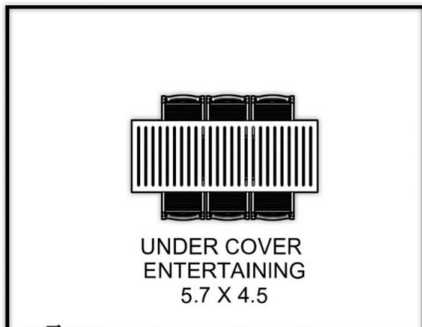
View : <https://www.ypa.com.au/7393552>



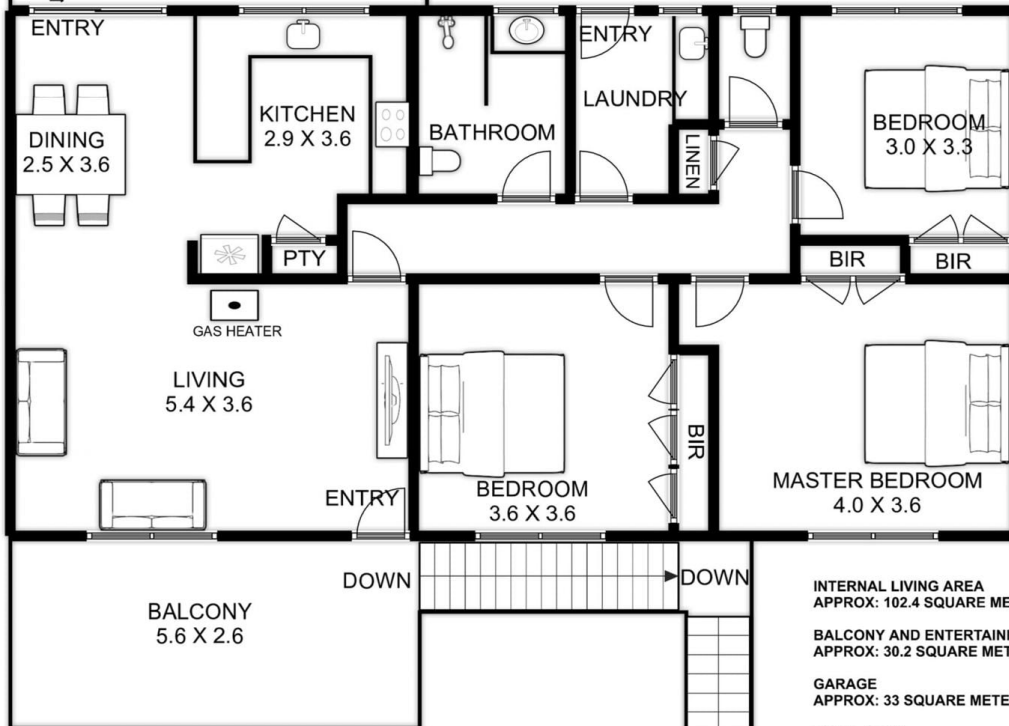
Will Likendey
0448 785 744



GARAGE



SITE



RESIDENCE

INTERNAL LIVING AREA
APPROX: 102.4 SQUARE METERS

BALCONY AND ENTERTAINING
APPROX: 30.2 SQUARE METERS

GARAGE
APPROX: 33 SQUARE METERS

TOTAL AREA
APPROX: 165.6 SQUARE METERS

42 NAUTILUS STREET RYE

This is an artistic representation. All measurements, dimensions and illustrated areas are approximate. It is the responsibility of all interested parties to verify all data depicted and omitted.