



17 Thomson Terrace Rye VIC

3 1 1

The ideal proposition for those looking for a weekend getaway, savvy investment, or your first Southern Peninsula home, this quintessential Rye beach house will be sure to check every box.

Full of natural light and surrounded by lush coastal gardens, the interior of the home combines quaint seaside charm and coastal appeal to create a space that is both warm and inviting. Offering a functional, uncomplicated design, the interior floor plan comprises three good sized bedrooms, a single bathroom and an open plan kitchen, living and dining room.

Outdoors, a lovely undercover deck and grassed rear yard provides ample space to entertain or simply enjoy the good life and relax amongst the quiet sounds of the Peninsula.

Price : \$ 920,000

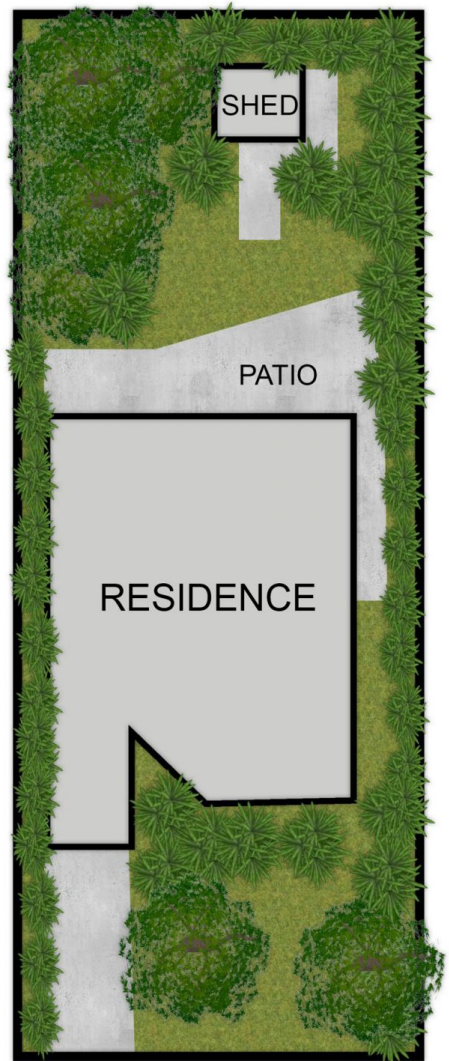
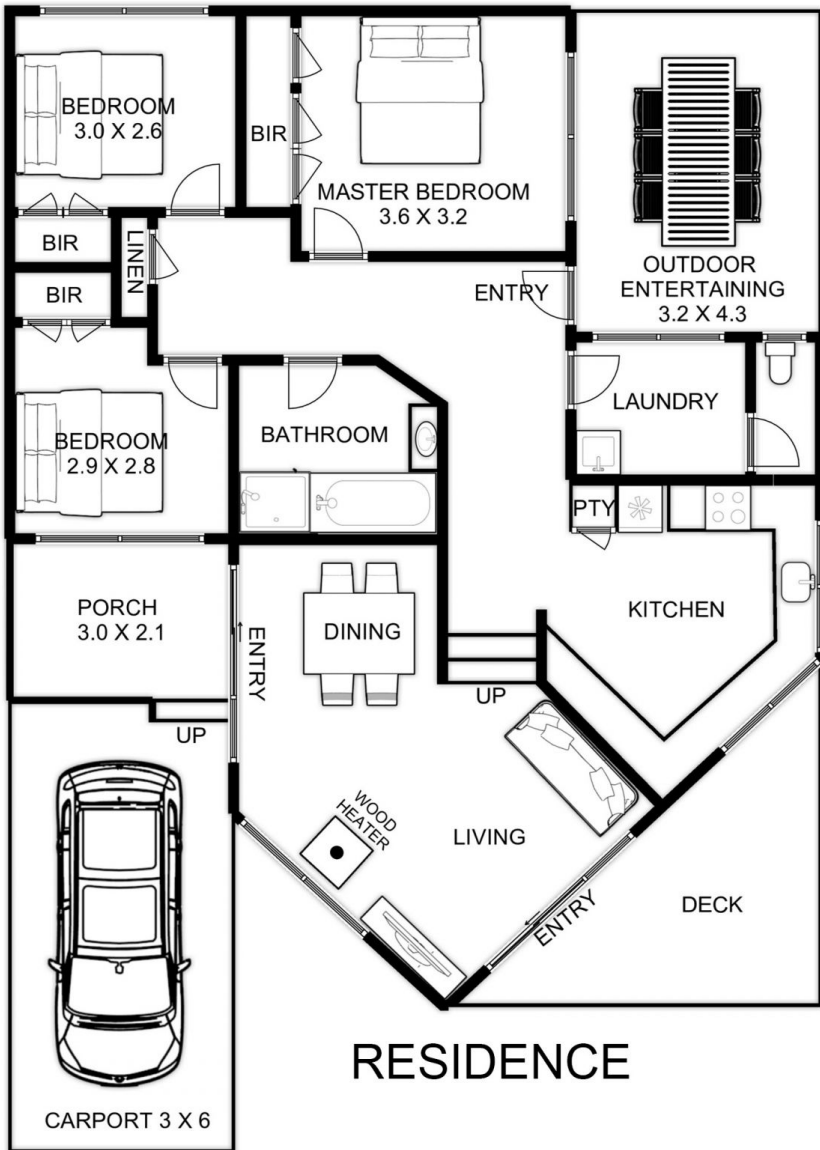
View : <https://www.ypa.com.au/7393548>



Jade Springer
0437 410 791



Ben Nutbean
0413 125 996



INTERNAL LIVING AREA
APPROX: 100.4 SQUARE METERS

ENTERTAINING , DECK AND PORCH
APPROX: 32.8 SQUARE METERS

CARPORT
APPROX: 18 SQUARE METERS

TOTAL AREA
APPROX: 151.2 SQUARE METERS

17 THOMSON TERRACE RYE

This is an artistic representation. All measurements, dimensions and illustrated areas are approximate. It is the responsibility of all interested parties to verify all data depicted and omitted.