



58 Field Street Rye VIC

4 1 1

What an opportunity!

A level allotment of approximately 944m² located in the heart of Rye awaits one lucky buyer to turn this huge block into your very own field of dreams!

Positioned just 500*m to the beach and only 800*m to Rye town centre including Rye Woolworths, The Independent Wine Store, Freaky Tiki Cafe and much more, this location is hard to beat!

Fancy a project? Renovate the existing home and turn it into the perfect weekend getaway, or put pen to paper and re-imagine the land to design the ultimate dream house STCA.

Contact Ben or Katrina for more information.

Price : \$ 885,000

Land Size : 944 sqm

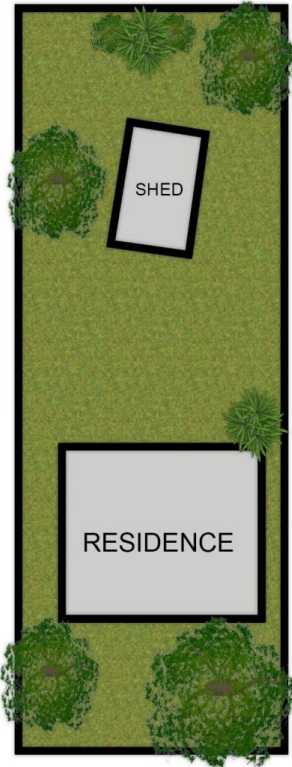
View : <https://www.ypa.com.au/7393543>



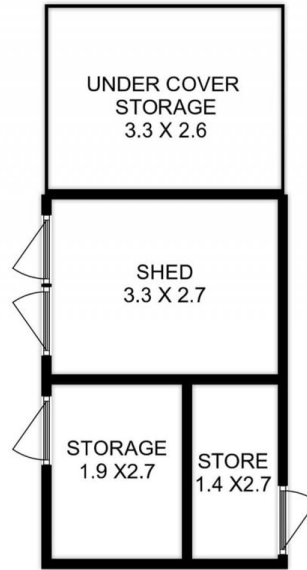
Ben Nutbean
0413 125 996



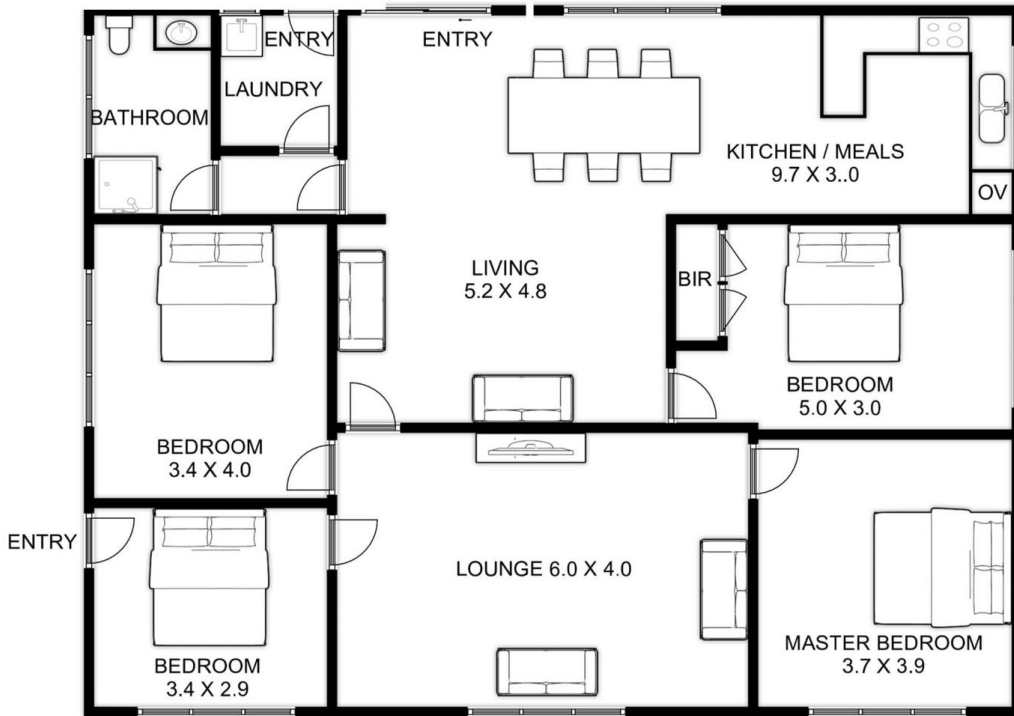
Katrina Talarico
0420 778 404



SITE



SHED / STORAGE



RESIDENCE

INTERNAL LIVING AREA
APPROX: 140.7 SQUARE METERS
SHED AND STORAGE
APPROX: 28.4 SQUARE METERS
TOTAL AREA
APPROX: 168.4 SQUARE METERS

58 FIELD STREET RYE

This is an artistic representation. All measurements, dimensions and illustrated areas are approximate. It is the responsibility of all interested parties to verify all data depicted and omitted.