



9 Derwin Street Rye VIC

5 2 2

Offering two separate street entrances and over 1,300*m2 of prime Mornington peninsula land, this fantastic property presents one lucky buyer with a rare and exciting opportunity to own a large family home in a much sought after location.

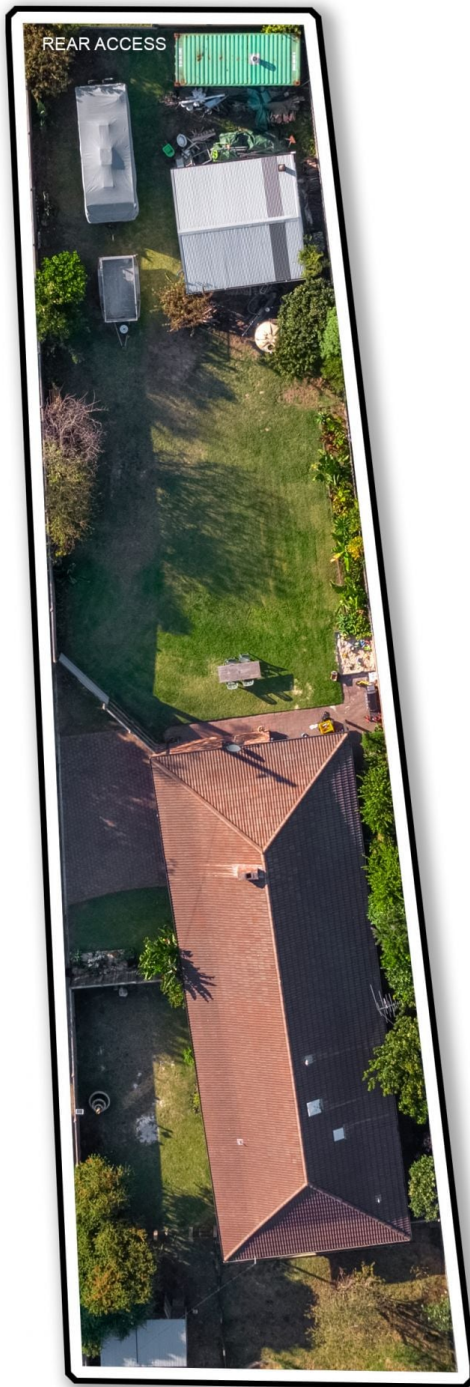
The capacious internal floor plan provides comfortable accommodations including five large bedrooms (all with built in robes) two bathrooms, two living rooms plus a separate rumpus/games room and dining room.

Outdoors, a huge level allotment provides a blank canvas to include the addition of a large pool, tennis court or huge outdoor entertaining space (all STCA). Two separate street entrances and secure fencing with sliding gates make fantastic parking for tradespeople or those who need boat and caravan accommodation. A complete separate double

Price : \$ 1,325,000
Land Size : 1308 sqm
View : <https://www.ypa.com.au/7393528>



Will Likendey
0448 785 744



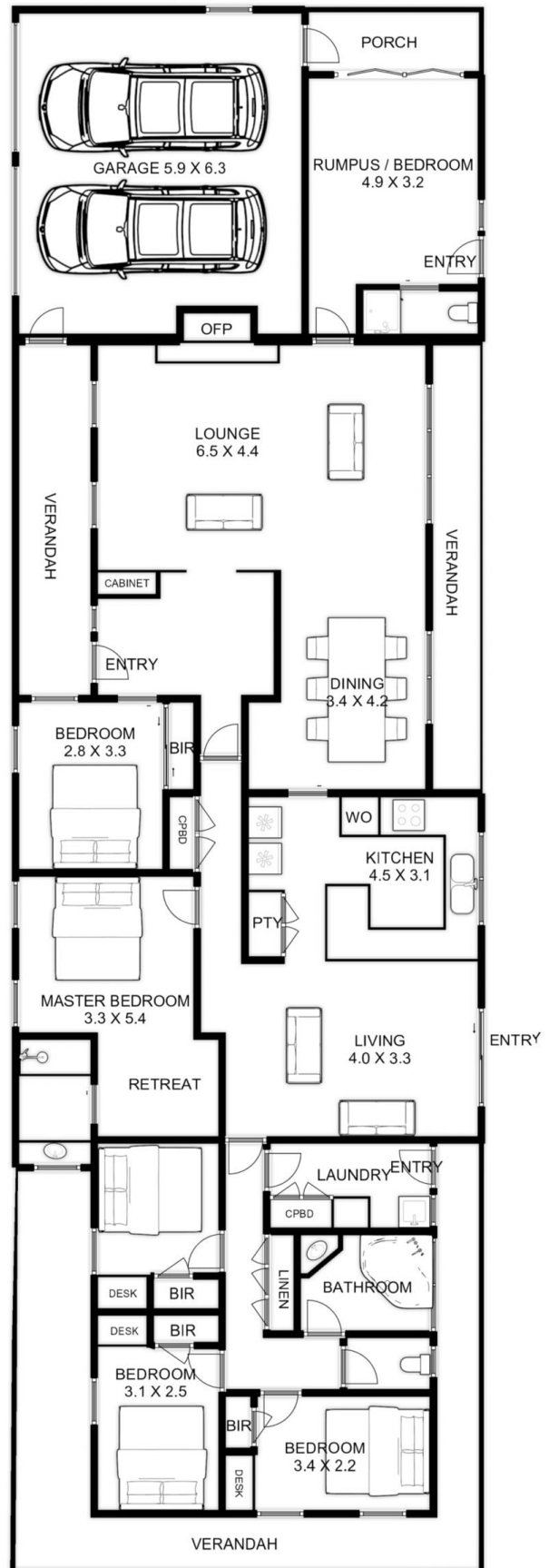
SITE

INTERNAL LIVING AREA
APPROX: 192.2 SQUARE METERS

VERANDA'S
APPROX: 43.8 SQUARE METERS

GARAGE
APPROX: 33.1 SQUARE METERS

TOTAL AREA
APPROX: 269.1 SQUARE METERS



RESIDENCE

9 DERWIN STREET RYE

This is an artistic representation. All measurements, dimensions and illustrated areas are approximate. It is the responsibility of all interested parties to verify all data depicted and omitted.