



490 Eastbourne Road Capel Sound VIC

3 1 1

OPEN CANCELLED - UNDER CONTRACT

Set in a picturesque location in the tight knit 'Woodthorpe Estate', all your coastal dreams will come to life at this immaculate beachside retreat where the land meets the sea in the most convenient and magical way. Beautiful in presentation and with not a thing left to do except move in and enjoy your new life by the bay - this gorgeous, light filled coastal home features a relaxed interior floor plan including three generous bedrooms, a newly renovated kitchen and designer bathroom, spacious living room and separate laundry. The home also features a crisp white colour palette, modern flooring and plush new carpets throughout, split system heating and cooling, quality appliances, an outdoor shower and high brush fencing.

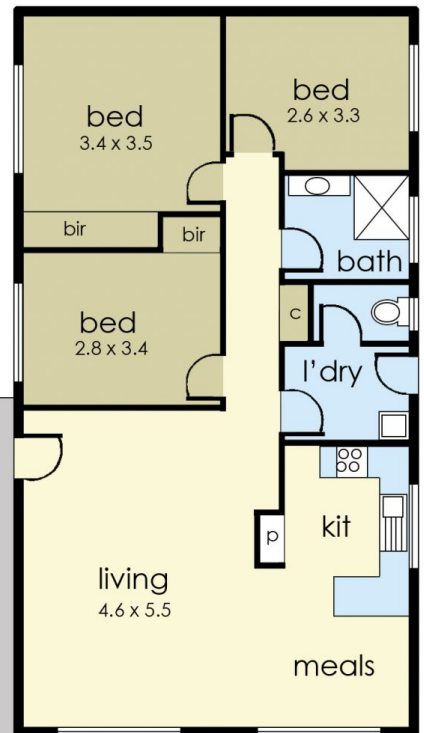
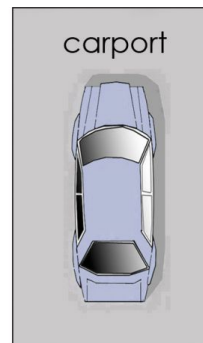
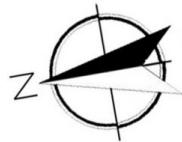
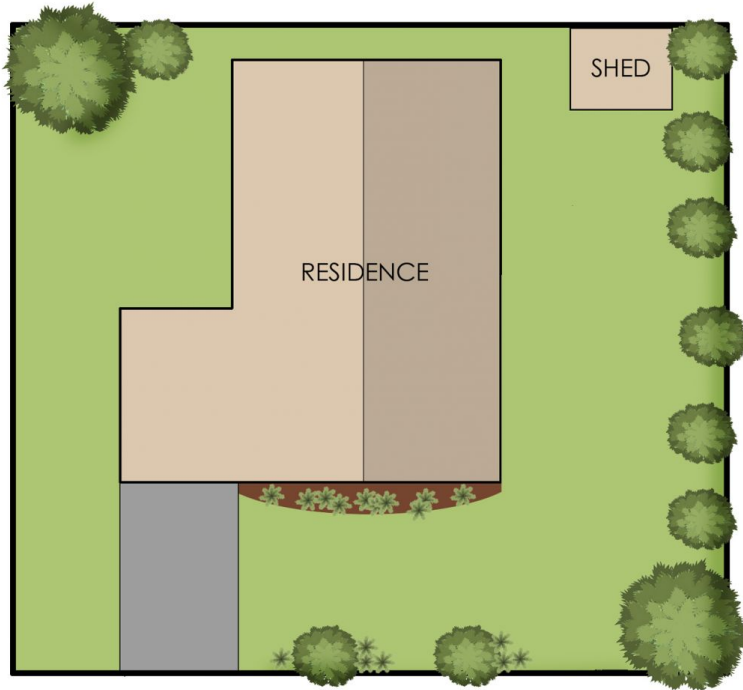
Price : \$ 810,000
Land Size : 381 sqm
View : <https://www.ypa.com.au/7393497>



Will Likendey
0448 785 744



Tony Talarico
0420 778 401



490 Eastbourne Road, Capel Sound

This floorplan is for illustration purposes only and no warranty is given to its accuracy. Purchasers are advised to carry out their own investigations.