



38 Beauna Vista Drive Rye VIC

3 1 2

With a distinctly unique style, reminiscent of a Mid-Century Mies van der Rohe through its deliberate use of floor to ceiling glass windows and simplistic rectangular design, this beautiful example of coastal architecture provides a multitude of exciting possibilities.

Nestled back from the street and set amongst established gardens on a glorious allotment of over 780*m2, the home provides quiet solace from the busy outside world and comprises three cosy bedrooms that are serviced by a singular bathroom, open plan kitchen/diner and a spacious living room.

Offering features typical of this style of architecture, including timber panelled ceilings, exposed beams and full height glass windows, this rare Mornington Peninsula gem offers an opportunity to undertake a sympathetic restoration and transform this eclectic beauty into a space that could grace the pages of home beautiful.

Price : \$ 960,000

Land Size : 784 sqm

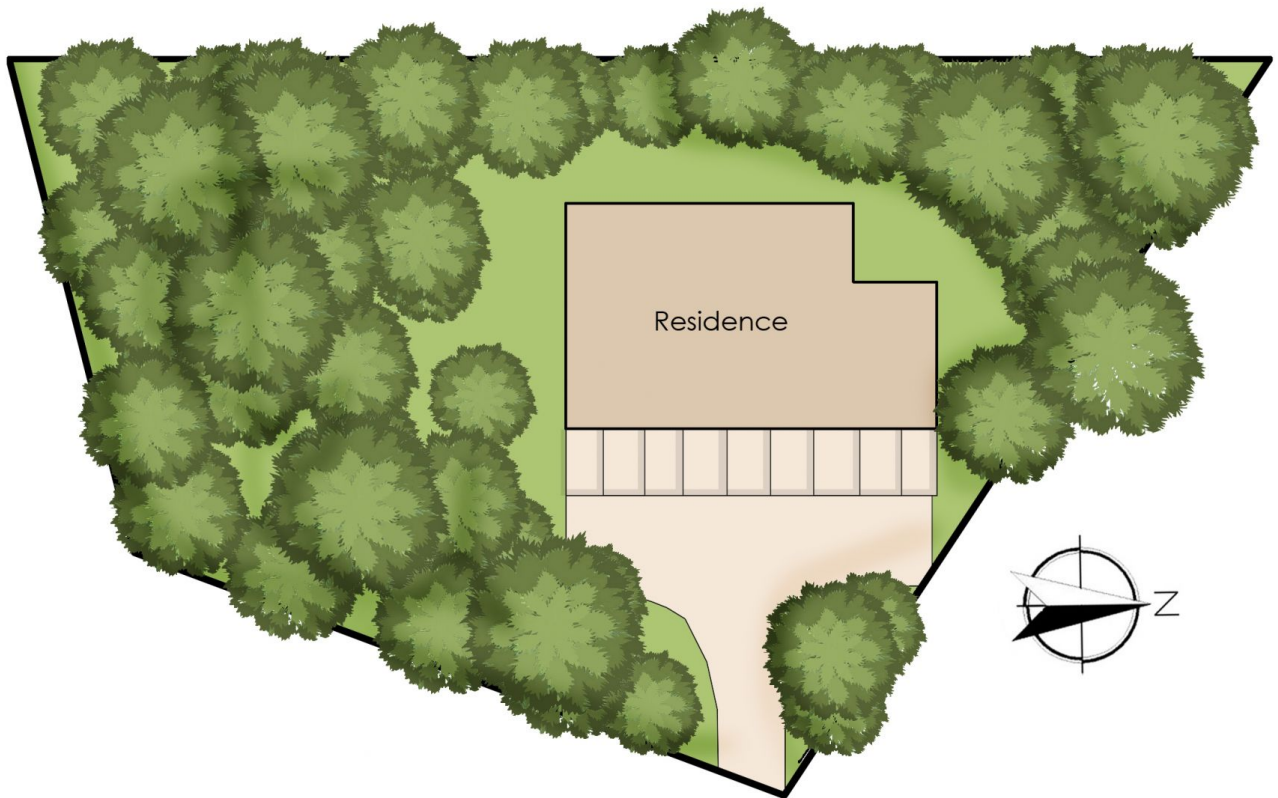
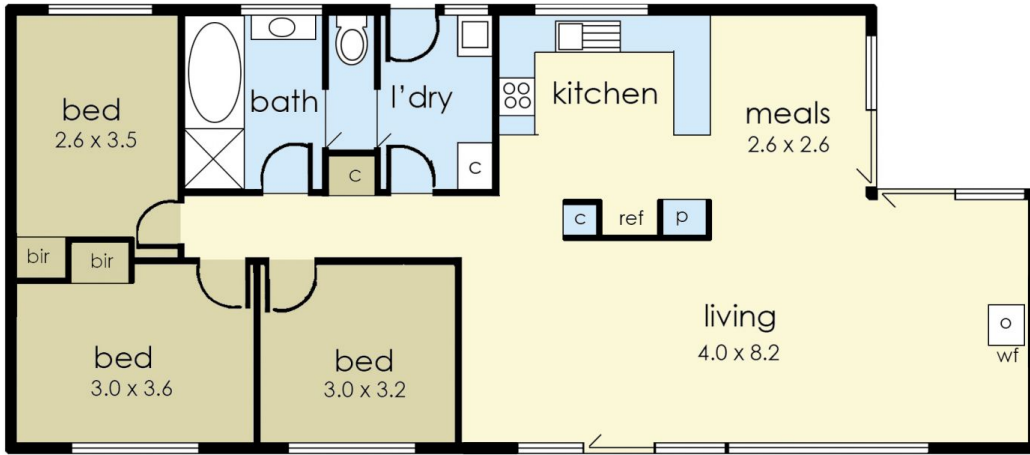
View : <https://www.ypa.com.au/7393482>



Tony Talarico
0420 778 401



Katrina Talarico
0420 778 404



38 Beauna Vista Drive, Rye

This floorplan is for illustration purposes only and no warranty is given to its accuracy. Purchasers are advised to carry out their own investigations.