



## 141 Brights Drive Rye VIC

3 2 1

Set on a beautiful allotment of over 650m<sup>2</sup> and surrounded by ancient Moonah trees and coastal gardens, this quintessential Rye beach house offers classic coastal design, underscored by natural light and a connection with its environment.

Charm, comfort, and the essence of home are all things you cannot escape when entering; an idea few homes can dream of.

The light filled, open plan interior has been executed beautifully with the comfortable living areas providing a warm and inviting space to unwind and relax.

Comprising three spacious bedrooms, two bathrooms and a large living and dining room, the home's modern elements including rich timber countertops, crisp white walls, plush carpets, and natural tactile elements, set the scene for the perfect coastal hideaway. Every detail of

**Price** : \$ 950,000

**Land Size** : 659 sqm

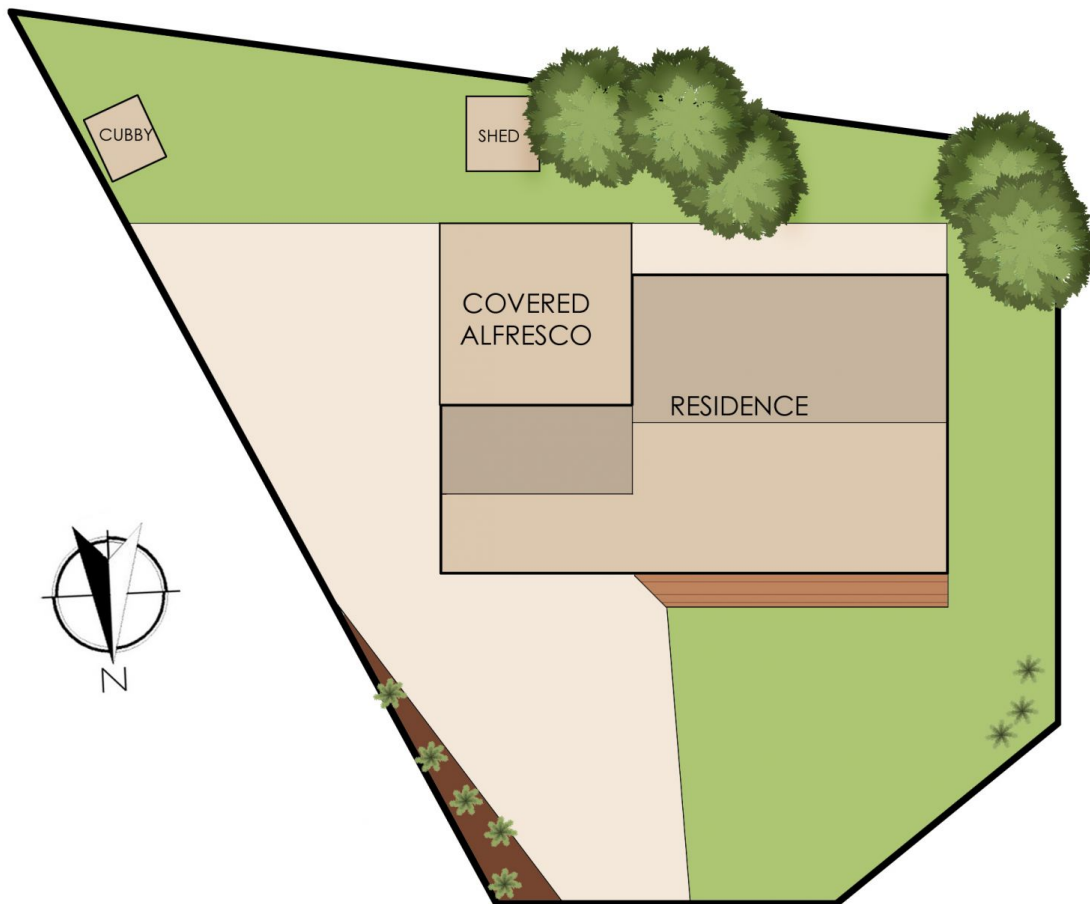
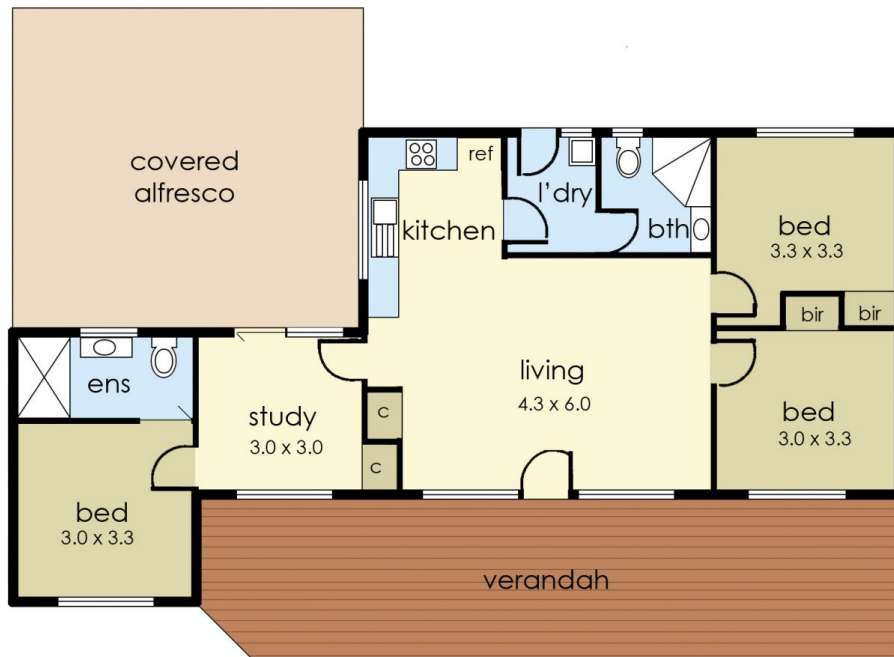
**View** : <https://www.ypa.com.au/7393478>



**Tony Talarico**  
0420 778 401



**Katrina Talarico**  
0420 778 404



## 141 Brights Drive, Rye

This floorplan is for illustration purposes only and no warranty is given to its accuracy. Purchasers are advised to carry out their own investigations.