



## 2/17 Rose Street Capel Sound VIC

3  2  1 

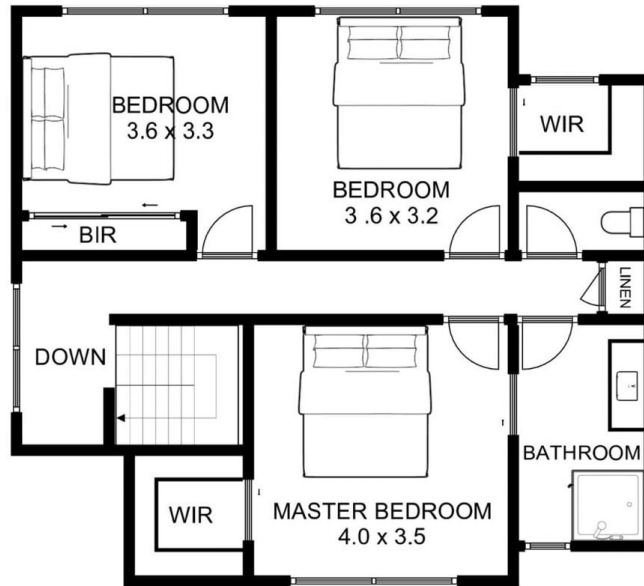
If you have been searching for the perfect 'lock up and leave' weekender, gorgeous first home or retirement pad by the sea - stop looking! This is the home you have been dreaming of. Located perfectly, in the centre of the Southern Mornington Peninsula and just \*400m to the Capel Sound Foreshore, this delightful double story townhouse will tick every single box. From the gorgeous designer kitchen complete with walk-in pantry, stone benchtops, sleek white cabinetry, subway tiles, stainless steel range, dishwasher, cooktop, and under-mount sink, to the beautiful outdoor courtyard with its mature hedging and lush green grass - it's love at first sight!

The ground level of the home, comprising of the main living and dining area, kitchen, laundry, powder room, storage cupboard and outdoor space, is bright, spacious, and welcoming. Separate from this area, the upper level houses

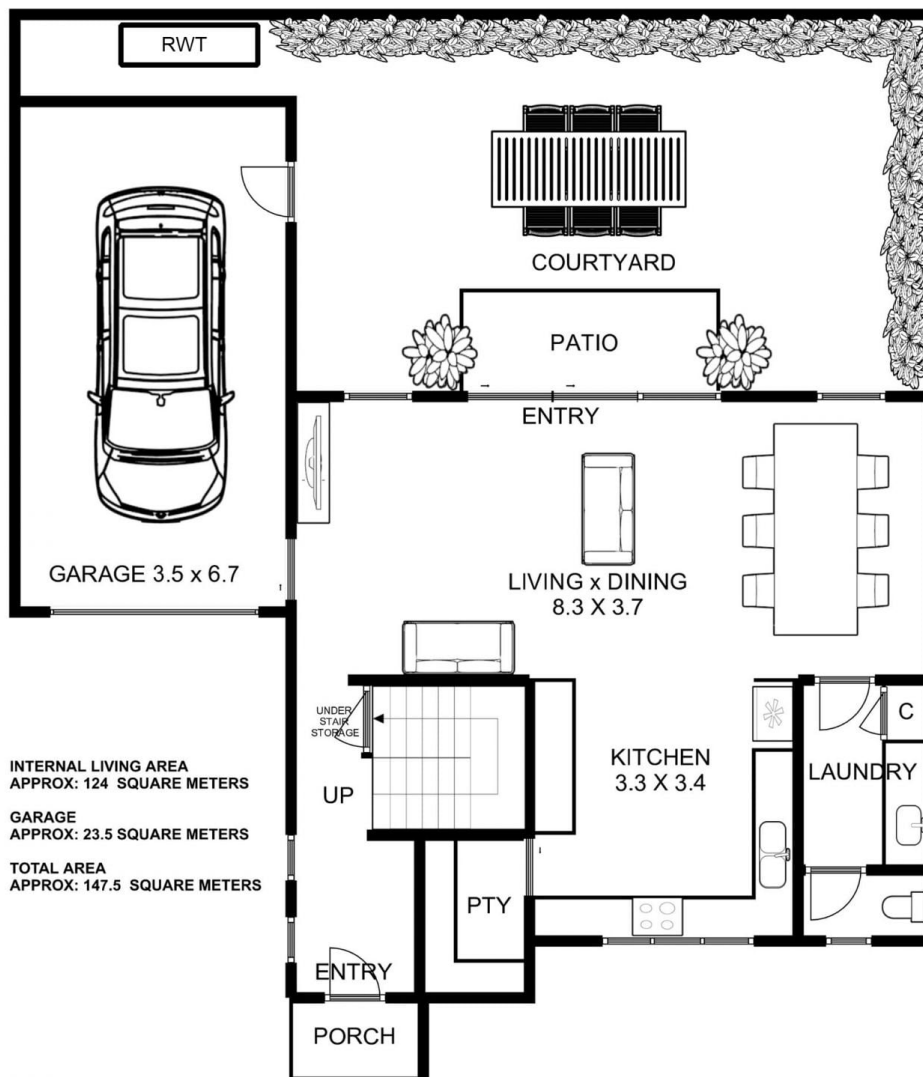
View : <https://www.ypa.com.au/7393408>



**Will Likendey**  
0448 785 744



UPPER LEVEL



INTERNAL LIVING AREA  
APPROX: 124 SQUARE METERS  
GARAGE  
APPROX: 23.5 SQUARE METERS  
TOTAL AREA  
APPROX: 147.5 SQUARE METERS

MAIN LEVEL

# 2/17 ROSE STREET CAPEL SOUND

This is an artistic representation. All measurements, dimensions and illustrated areas are approximate. It is the responsibility of all interested parties to verify all data depicted and omitted.