



## 16 Western Parade Point Leo VIC

3  2  2 

### ABSOLUTE BEACHFRONT

Once in a generation, an opportunity becomes available to purchase a property so special, so rare, so unique, that once you are there, it feels like a dream!

Set on\*1966m2 of pristine, unspoiled land and located in the exclusive Point Leo enclave surrounded by other magnificent coastal properties, this charming weekender with absolute beachfront positioning offers a peaceful retreat from everyday life, surrounded by nature and the gentle sounds of the ocean right on your doorstep.

The property also provides a once in a lifetime opportunity to keep the original beach house as a low maintenance weekend getaway or engage an architect to design and create a stunning new residence and landscaped grounds.

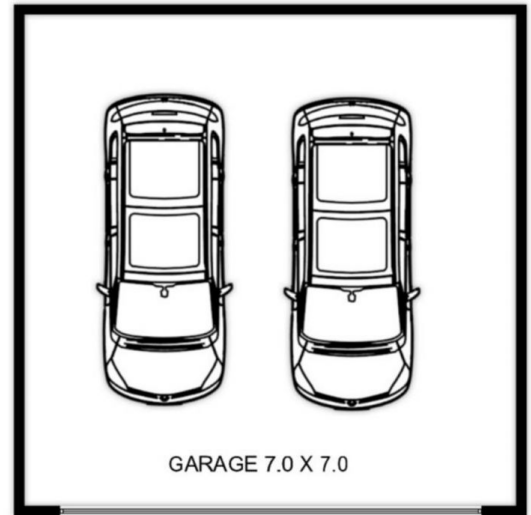
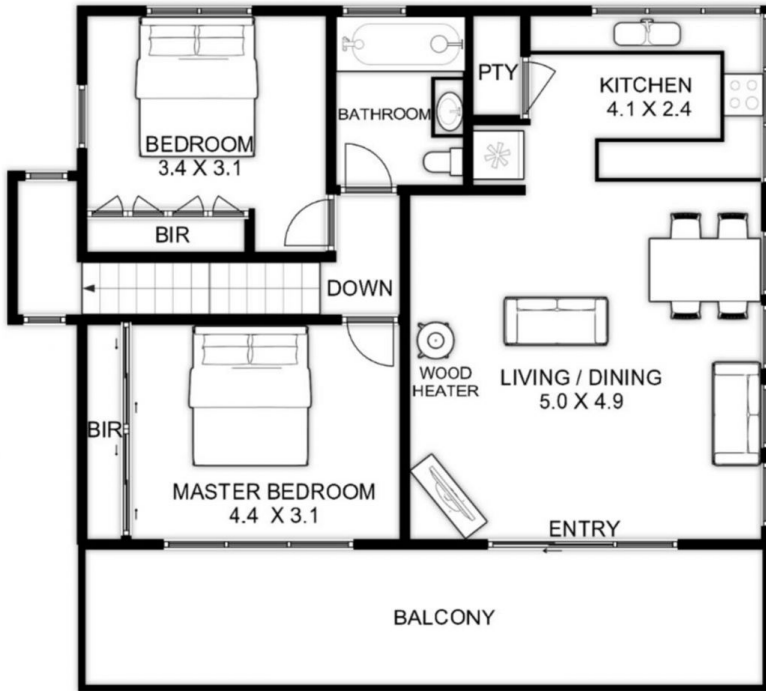
Home to one of the Peninsulas most famous Surf Beaches

**Price** : \$ 3,200,000

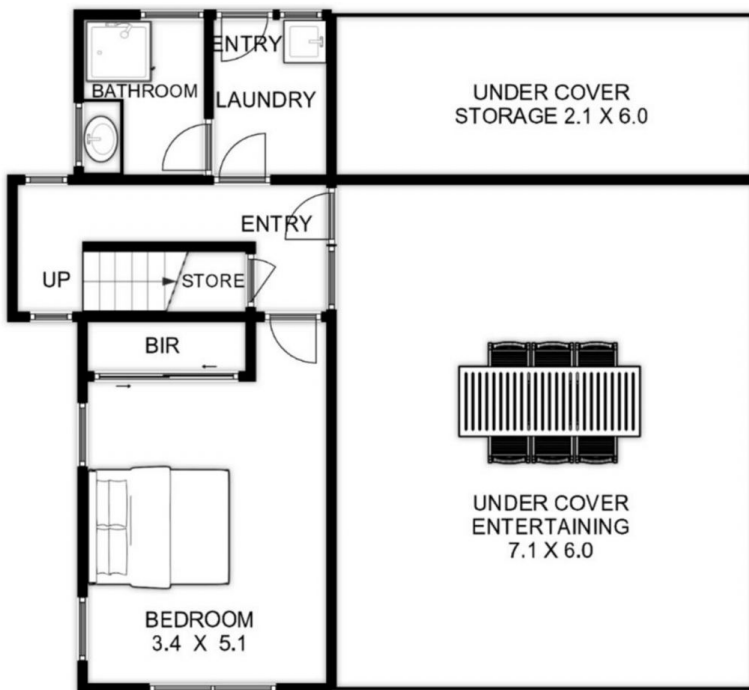
**View** : <https://www.ypa.com.au/7393379>



**Ben Nutbean**  
0413 125 996



GARAGE



# 16 WESTERN PARADE POINT LEO

This is an artistic representation. All measurements, dimensions and illustrated areas are approximate. It is the responsibility of all interested parties to verify all data depicted and omitted.