



188 Melbourne Road Rye VIC

3  2  2 

Set on *632m² of beautifully landscaped, coastal grounds and located in the highly desirable Tyrone Foreshore precinct, this picture-perfect, charming reflection of 'coast meets country' will pull at every single one of your heartstrings and leave you feeling right at home.

Warm and welcoming, the home's enchanting, light filled interiors shine through a display of unique features including high vaulted ceilings, bespoke light fittings, warm polished timber floors, and delightful master bedroom to the upper level complete with ensuite and quaint dormer window.

Two further spacious bedrooms, updated main bathroom and open plan kitchen, living and dining complete the ground level accommodations. Further discernable features include air conditioning, ceiling fans, gas log fire, two car garage, and additional parking for your caravan or boat. Situated just a short distance to both the crystal clear

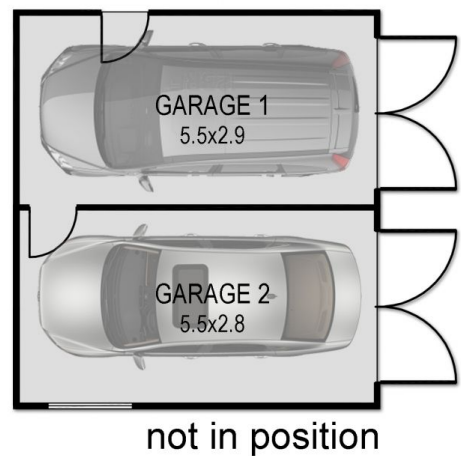
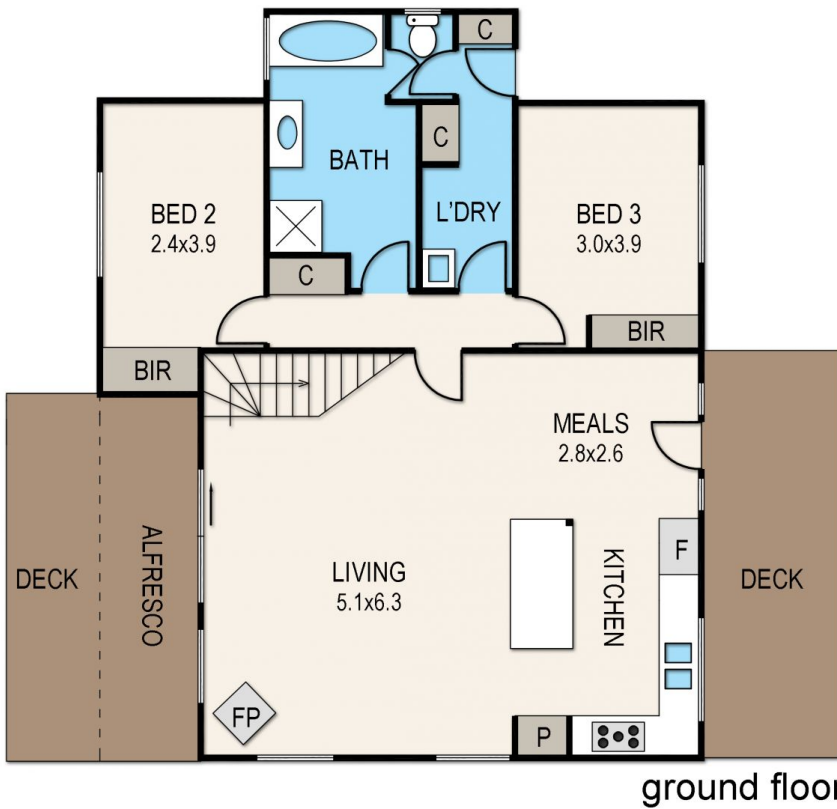
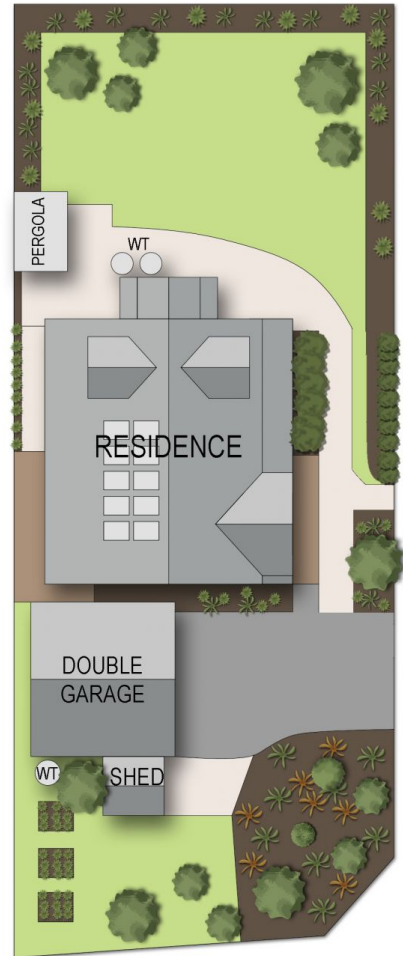
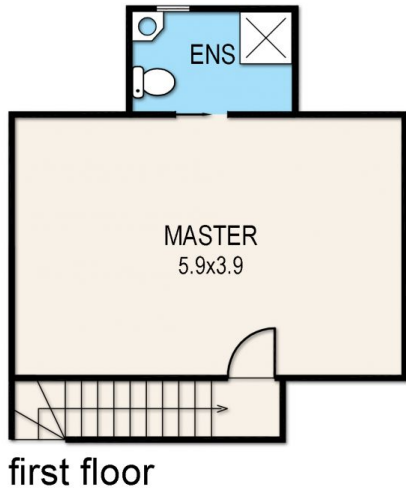
Land Size : 632 sqm

View : <https://www.ypa.com.au/7393370>



Jade Springer
0437 410 791

188 Melbourne Road, Rye



Whilst every attempt has been made to ensure the accuracy of this floorplan, measurements of doors, windows, rooms and any other items are approximate only. The producer or the agent cannot be held responsible for any errors, omissions or misstatements. This plan is for illustrative purposes only and should be used as such.