



54 Florence Drive Rye VIC

3  1  1 

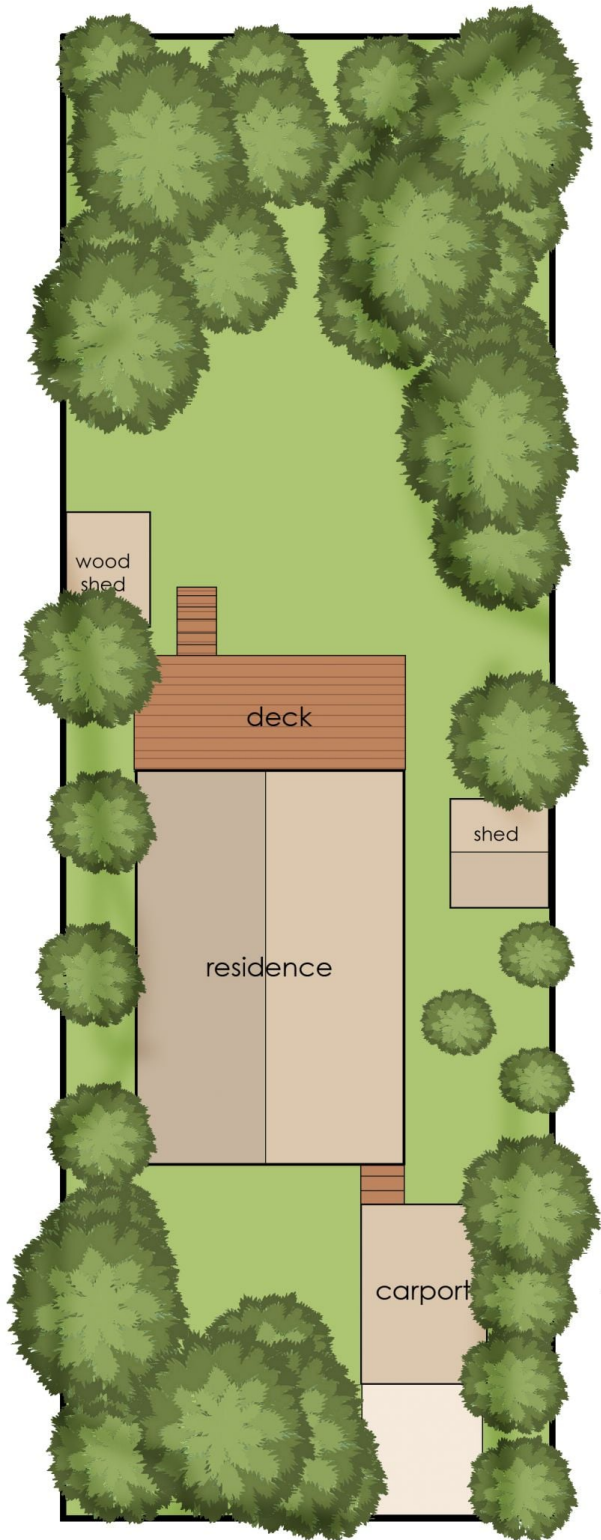
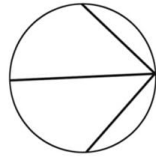
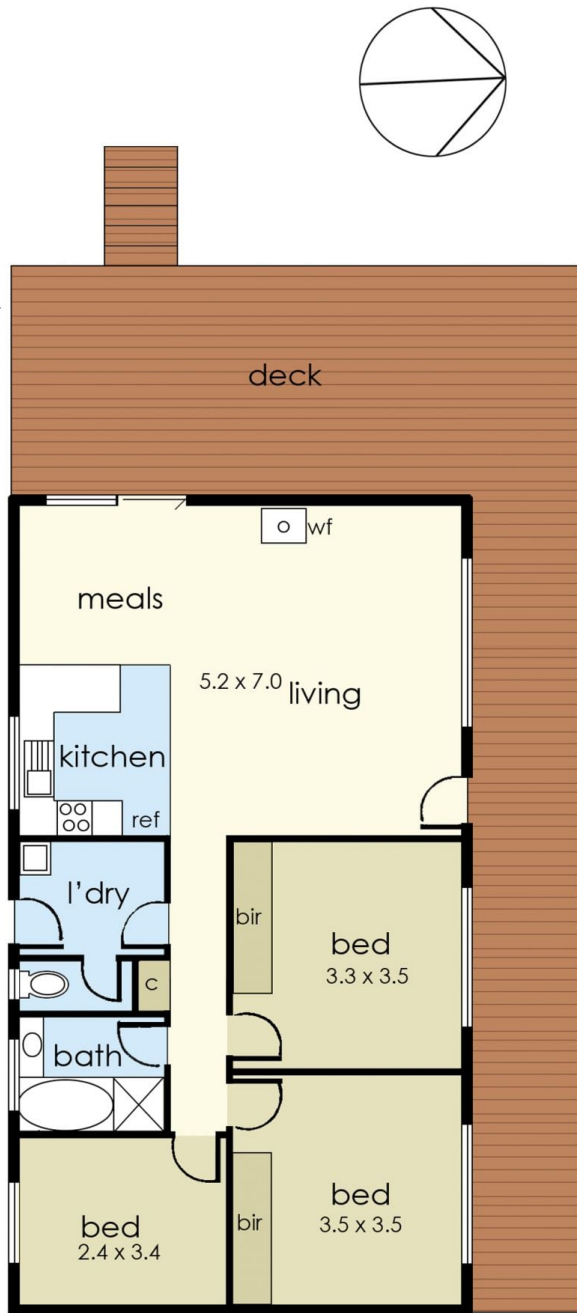
Brimming with charm and full of character, this gorgeous seaside abode, located in a much sought after pocket of the Tyrone Foreshore, will make your heart sing! Sitting pretty on approximately 768m² and offering comfortable accommodations including three good sized bedrooms, main bathroom, separate toilet and laundry, and open plan living, kitchen and dining; the homes neat and cosy interiors are move in ready yet also offer the potential to create a space all your own. The inclusion of unique building elements such as timber panelled ceilings, exposed beams, wood burning coonara heater and a cedar clad exterior all add to the warmth and appeal of this incredibly special beach house. Outside, a huge wrap around deck with a lovely north-west orientation provides a terrific space to unwind and relax, entertain family and friends, or enjoy the peaceful surroundings whilst soaking up the midday sun. Beautiful Moonah trees and low

Price : \$ 777,000

View : <https://www.ypa.com.au/7393350>



Jade Springer
0437 410 791



54 Florence Drive, Rye

This floorplan is for illustration purposes only and no warranty is given to its accuracy. Purchasers are advised to carry out their own investigations.