



20 Adam Street RYE VIC

4 2 2

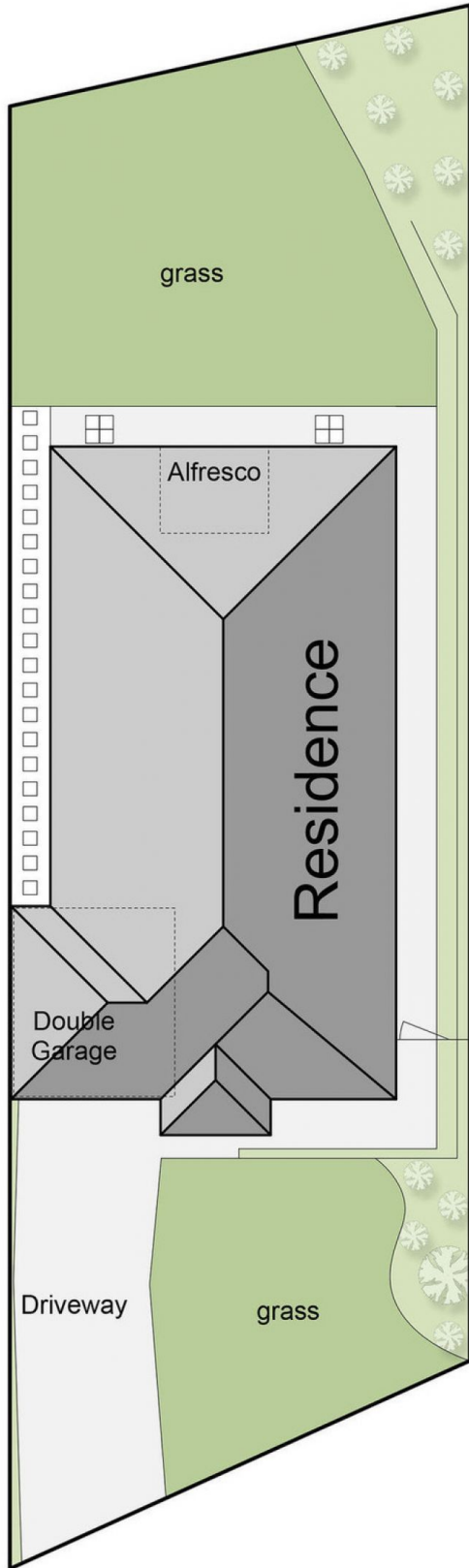
BRAND NEW, BEACHSIDE LIVING

Prepare to be wowed as you step inside this beautiful brand new home, showcasing modern living with a coastal edge and brimming full of stylish, comfortable elements. The home offers a specifically family friendly floor plan with four good sized rooms, two bathrooms (ensuite to master), powder room and three separate living areas ensuring that everyone has their own space. The open plan living / kitchen zone flows out onto a covered alfresco area and is flooded with natural light, making it the perfect place to come together and enjoy life's simple pleasures as a family. Styled to perfection, the interior elements have been kept neutral with small hints of colour - keeping very on trend with 2020 design concepts. The elegant modern feel continues with features including floor to ceiling tiles and freestanding tub in the bathrooms, subway tile splash back

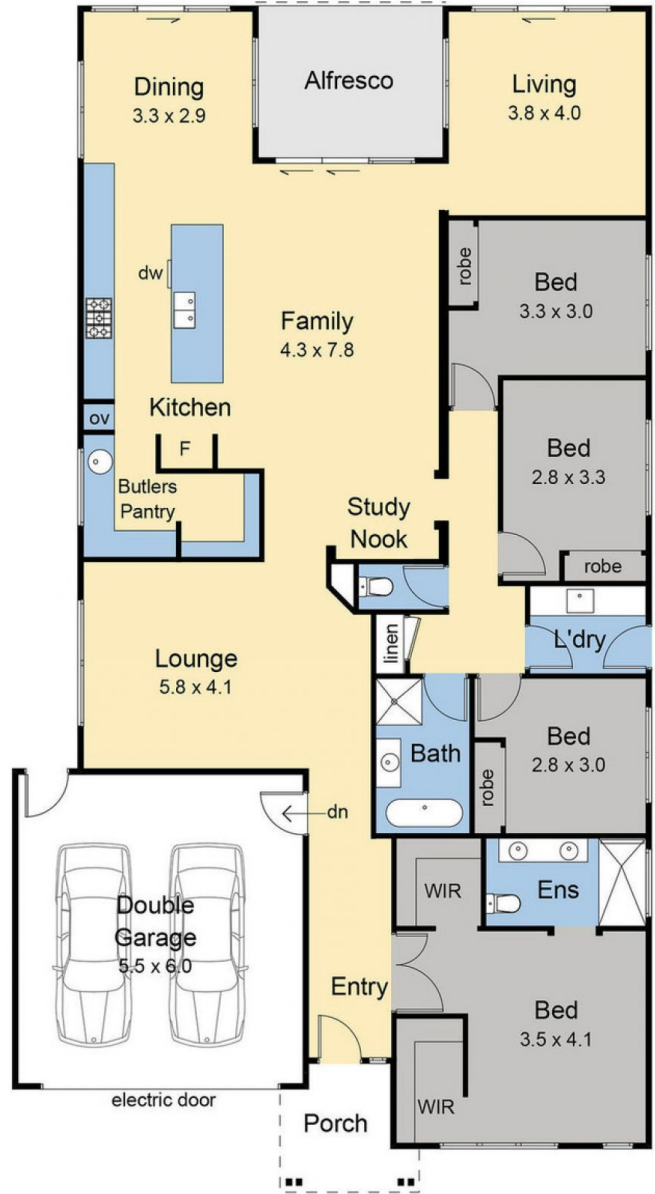
View : <https://www.ypa.com.au/7393214>



Jade Springer
0437 410 791



Site Plan



Floor Plan

20 Adam Street, Rye

This floor plan has been prepared with all due care to the accuracy of the above information. Purchasers are advised to make their own investigations.

