



## 241 Melbourne Road (OFF SERVICE ROAD) RYE VIC

4 2 2

Situated in one of Rye's most prized and convenient locations right on the Blairgowrie border and set back from the road, this fantastic family home on a magnificent flat rectangular allotment of 862m<sup>2</sup> approx. is one you don't want to miss.

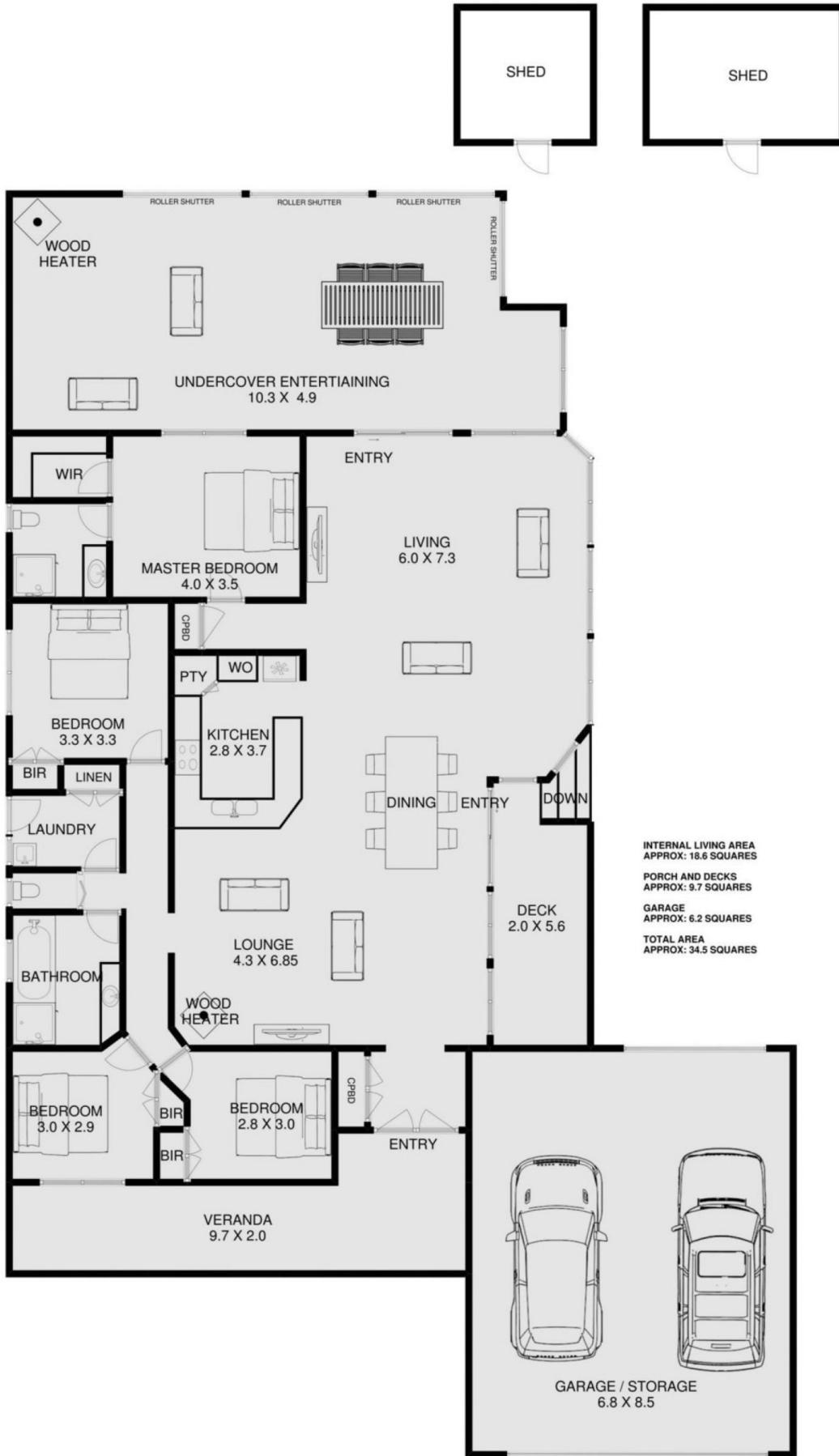
Featuring four bedrooms, two bathrooms, huge open plan living, kitchen and dining space, double car garage, and massive decked outdoor entertaining area and back yard - this home really does cater for the whole family!

An amazing home should always be complimented by an incredible location and this home is no exception! In less than 5 minutes you could be sipping a latte at Blairgowrie Village, be swimming in the sparkling waters of Bridgewater Bay, running along the sunny Tyrone Foreshore or enjoying a bottle of red and a beautiful dinner at the Yacht Club.

**Land Size** : 862 sqm  
**View** : <https://www.ypa.com.au/7393159>



**Tony Talarico**  
**0420 778 401**



# 241 MELBOURNE ROAD RYE

This is an artistic representation. All measurements, dimensions and illustrated areas are approximate. It is the responsibility of all interested parties to verify all data depicted and omitted.