



## 28 Niblick Street RYE VIC

3 2 3

Be captivated as you immerse yourself in the coastal allure of this stunning peninsula property located minutes from the sparkling waters of the Tyrone Foreshore. Set on an ideal flat allotment of 780m<sup>2</sup>\* and surrounded by other beautiful coastal properties, the homes relaxed vibe as well as its practicality for family living and close proximity to all that the peninsula lifestyle offers ensures that you will feel right at home.

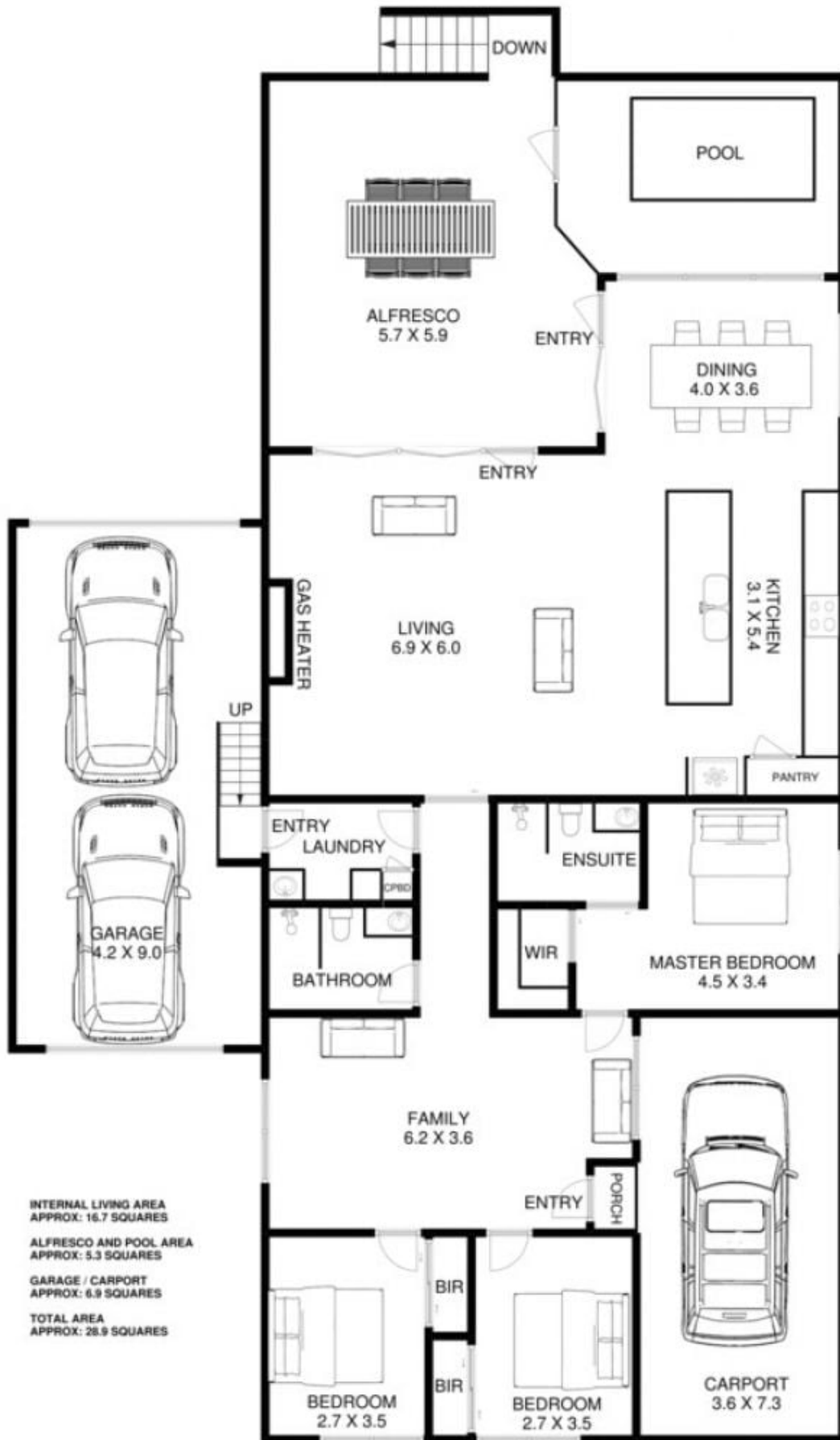
Combining a long list of luxury features, this exceptional three bedroom home offers wonderful separation allowing comfortable single level living whilst also easily accommodating family and friends for Christmas day gatherings or larger celebrations.

Enjoying its spectacular position in a private, quiet and tightly held pocket of the Tyrone area, this is your

**Price** : \$ 940,000  
**Land Size** : 780 sqm  
**View** : <https://www.ypa.com.au/7393148>



**Jade Springer**  
0437 410 791



INTERNAL LIVING AREA  
APPROX: 16.7 SQUARES

ALFRESCO AND POOL AREA  
APPROX: 5.3 SQUARES

GARAGE / CARPORT  
APPROX: 6.9 SQUARES

TOTAL AREA  
APPROX: 28.9 SQUARES

## 28 NIBLICK ST RYE

This is an artistic representation. All measurements, dimensions and illustrated areas are approximate. It is the responsibility of all interested parties to verify all data depicted and omitted.