



## 2 St Andrews Drive RYE VIC

3  1  2 

This 3 bedroom brick home is positioned on a highly sought after large corner block of 920\* with driveway access from both St Andrews Drive & Thomson Terrace.

**Land Size** : 920 sqm  
**View** : <https://www.ypa.com.au/7393142>

### Featuring:

3 bedrooms with built in robes

Single garage and carport offering dual access there are ample car/boat accommodation options

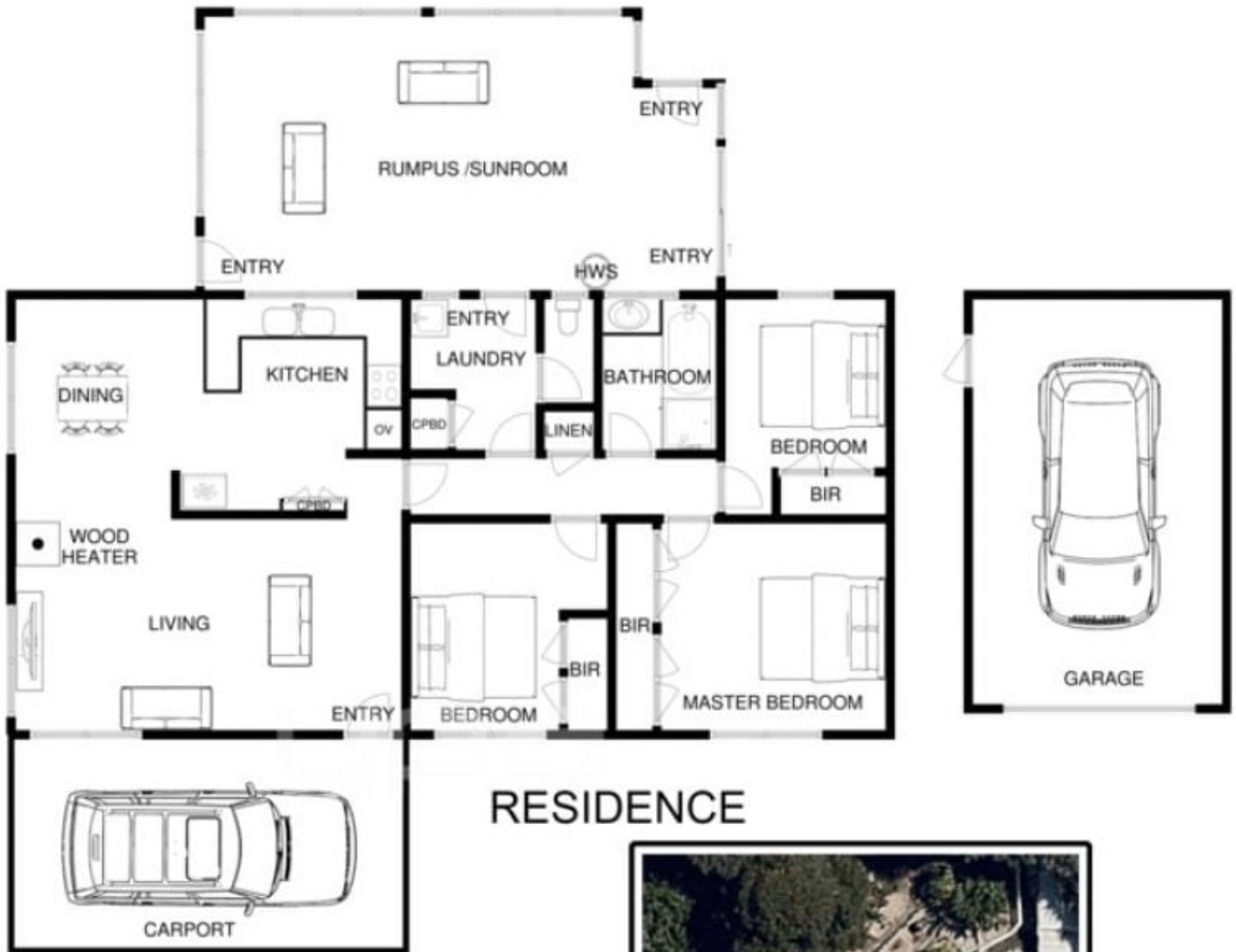
Perfect for buyers looking to renovate and add value

Situated in a lovely pocket among many newly established homes

Large sunroom offers a lovely outlook to the backyard



**Jade Springer**  
0437 410 791



## RESIDENCE

0M 5M



## SITE

# 2 ST ANDREWS DRIVE RYE

This image is an artistic representation. It is the responsibility of all interested parties to verify all data depicted and omitted.