



37 Shirlow Avenue RYE VIC

2  1  2 

600m* to Bay Beach and only a short stroll to Rye shopping strip

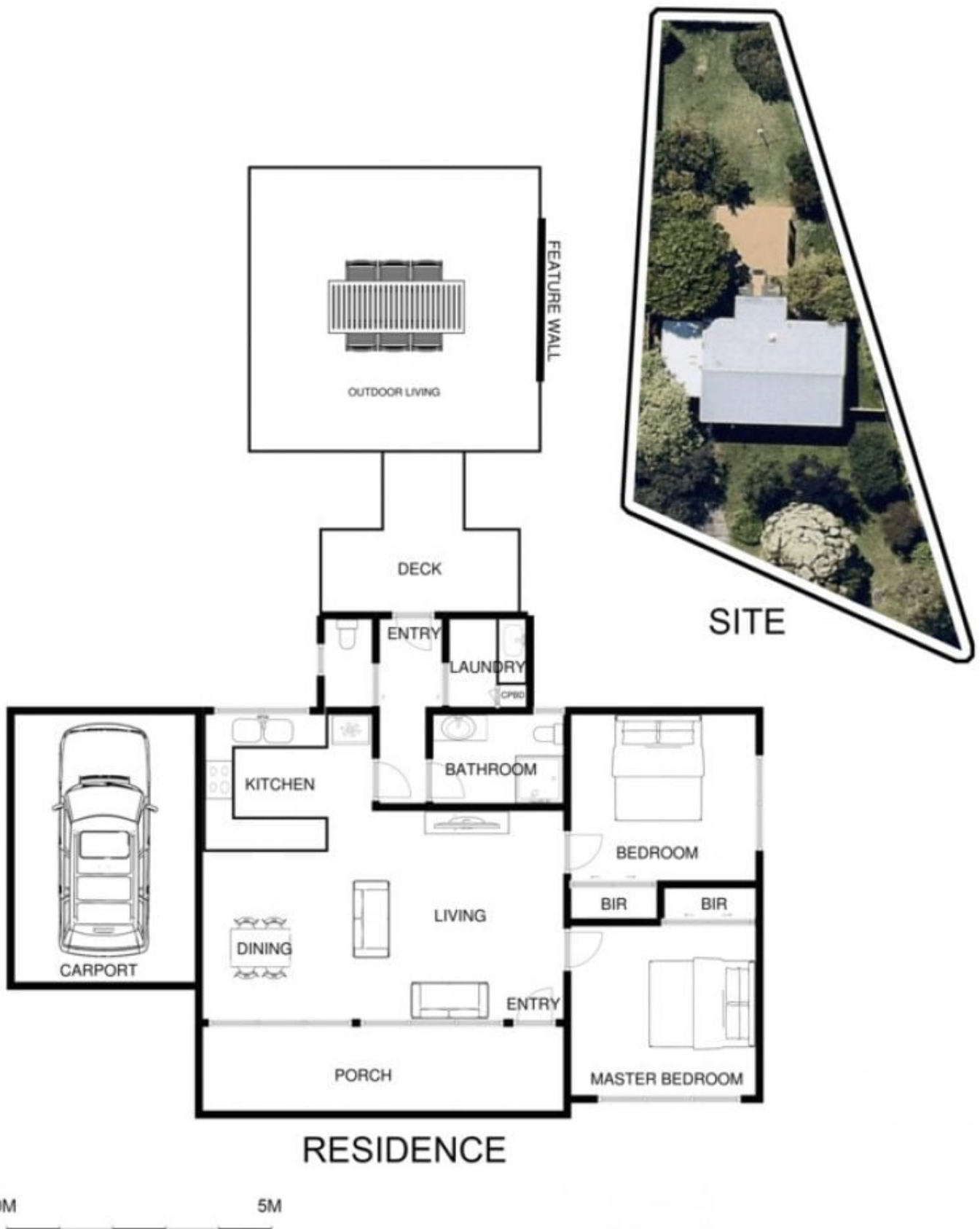
Land Size : 752 sqm
View : <https://www.ypa.com.au/7393124>

A very low maintenance, spacious flat block of 752m2*

Modernised open plan living, two good sized bedrooms with BIR's, brand new kitchen, laundry and bathrooms, all done - nothing else to do!

A perfect home for entertaining, whether it be hosting a barbeque, relaxing with friends and family on your outdoor setting or enjoying a quiet drink on the front porch.

In one of Rye's best locations and only a leisurely walk to the beach, restaurants, shops and Rye Primary School, this fantastic home would suit small families, holiday makers or retirees seeking their place in the sun.



37 SHIRLOW AVE RYE

This image is an artistic representation. It is the responsibility of all interested parties to verify all data depicted and omitted.