



37 Green Valley Cresnet HAMPTON PARK VIC

3 1 3

Situated in a prime location, short walking distance to Woolworths, local shops, local kindergartens, primary schools and high schools, this is high demand real estate at its best.

Land Size : 385 sqm

View : <https://www.ypa.com.au/7393117>

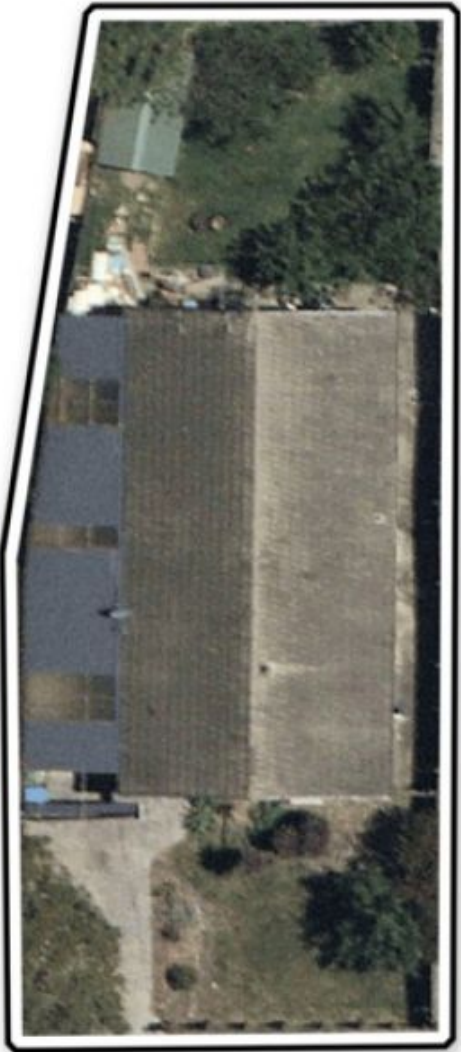
Offering three bedrooms with BIR's

Hardwood floorboards in all bedrooms, kitchen, living and dining areas.

Ducted heating throughout and split system cooling in the living area.

Three car carport, which continues through to the backyard.

Multiple bus stops only meters from the front door.



SITE



RESIDENCE

37 GREEN VALLEY CRES HAMPTON PARK

This image is an artistic representation. It is the responsibility of all interested parties to verify all data depicted and omitted.