



52 Marcia Avenue RYE VIC

3  1  2 

An iconic Peninsula position coupled with a quintessential coastal property result in a wonderful place in which to call home, or your home away from home. Exuding casual, yet timeless appeal, you just cant beat this feeling.

Land Size : 889 sqm

View : <https://www.ypa.com.au/7392993>

Featuring:

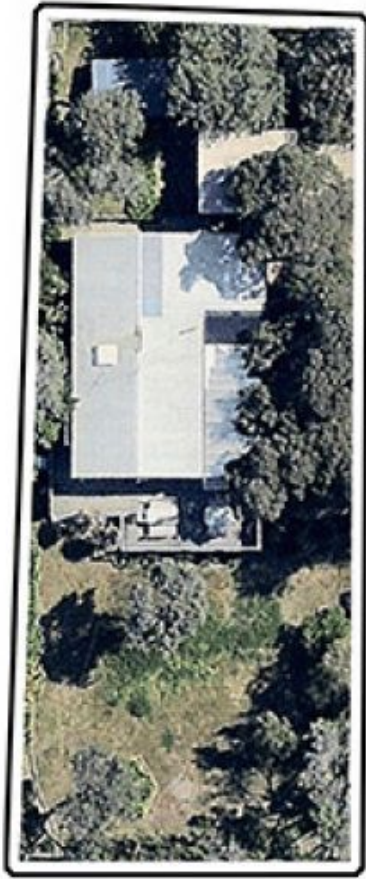
Just a few houses from the coastal tracks that dot the sand dunes as you make your way to the surf

Simply stroll to the end of your street and the iconic Number Sixteen Beach becomes your new local

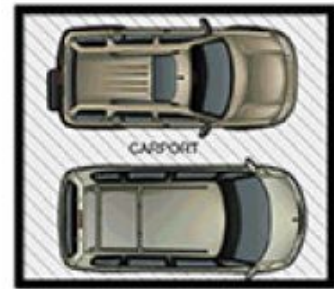
Rustic, raw and ready to become your everyday haven or tailor-made beach house

Bordering on its pricey Blairgowrie neighbour and representing tremendous value

Fabulous sunken living area, framed by walls of glass where the natural landscape greets your every gaze



SITE



RESIDENCE

52 MARCIA AVE RYE

This image is an artistic representation. It is the responsibility of all interested parties to verify all data depicted and omitted.