



10 Chenier Street RYE VIC

3  1 

Perched on an elevated allotment, this light-filled property feels effortlessly connected to its seaside location. Enjoying an abundance of natural flora and a private position at the end of a long driveway, this home is perfect for living, investing or indulging in extra-long weekends.

Land Size : 949 sqm
View : <https://www.ypa.com.au/7392963>

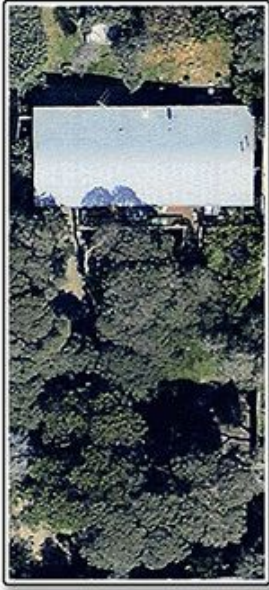
Featuring:

Sitting proudly at towards the peak of the allotment and overlooking a plethora of native Moonahs and coastal greenery

Broad front deck which provides the ideal space to take in the grounds and your relaxing outlook

Three generous bedrooms, plus a welcoming street appeal featuring a picket fence

Coastal hues dominate the interiors which are anchored by rich timber flooring



SITE



RESIDENCE

10 CHENIER STREET RYE

This image is an artistic representation. It is the responsibility of all interested parties to verify all data depicted and omitted.