



88 Nepean Highway DROMANA VIC

3  1  1 

Only a few hundred metres from the blues of Port Phillip Bay is this charming three bedroom home. Conveniently set on a service road and enjoying an abundance of natural light, this brick-veneer residence would be the ideal coastal weekender, fuss-free investment or everyday retreat.

Land Size : 562 sqm
View : <https://www.ypa.com.au/7392697>

Featuring:

Light and bright living zones and bedrooms courtesy of floor to ceiling windows

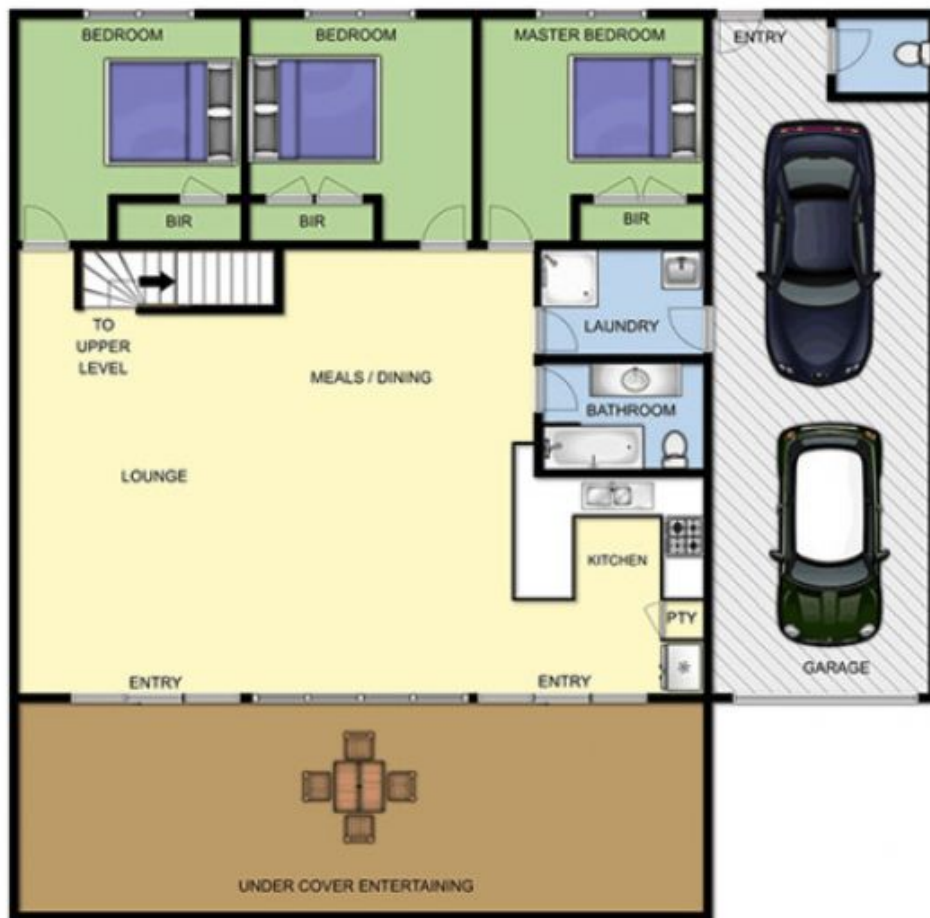
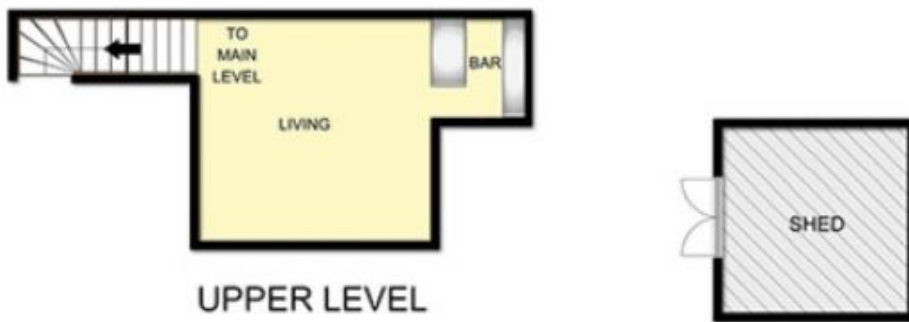
Three large bedrooms, all with built-in robes

Neutral tones and finishings enhance the seaside feel

Absolutely immaculate interiors coupled with low-maintenance grounds

A host of outdoor entertaining options including a front courtyard leading off the kitchen

Expansive undercover alfresco area, perfect for



MAIN LEVEL



88 NEPEAN HWY DROMANA

This image is an artistic representation. It is the responsibility of all interested parties to verify all data depicted and omitted.