



## 12 Innkeeper Place Sydenham VIC

4 1 2

Building development opportunity (STCA), investing alike or first home buyer!

Positioned in a quiet pocket of Sydenham within close distance to shopping centres, schools, transport and parks. This property has exciting potential for developers (STCA), investors alike or first home buyers! All set on approx. 739m<sup>2</sup> this original brick home offers; four bedrooms all with BIR, central bathroom, kitchen adjoining meals and living area, closed pergola with access to the backyard filled with plenty of opportunities.

Perfectly located with lots of room to manoeuvre (STCA), this property you definitely don't want to miss out on!

Appointments are conducted in accordance with the latest government guidelines. We appreciate your cooperation.

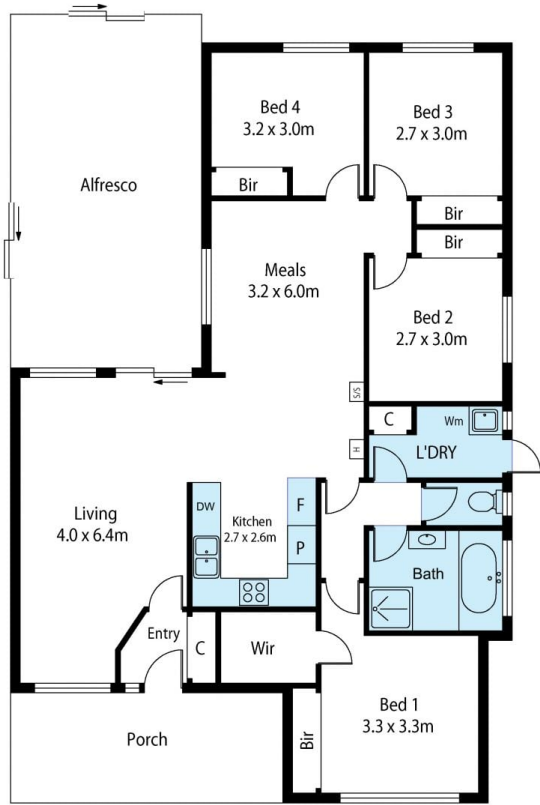
**Price** : \$ 660,000  
**Land Size** : 739 sqm  
**View** : <https://www.ypa.com.au/7391846>



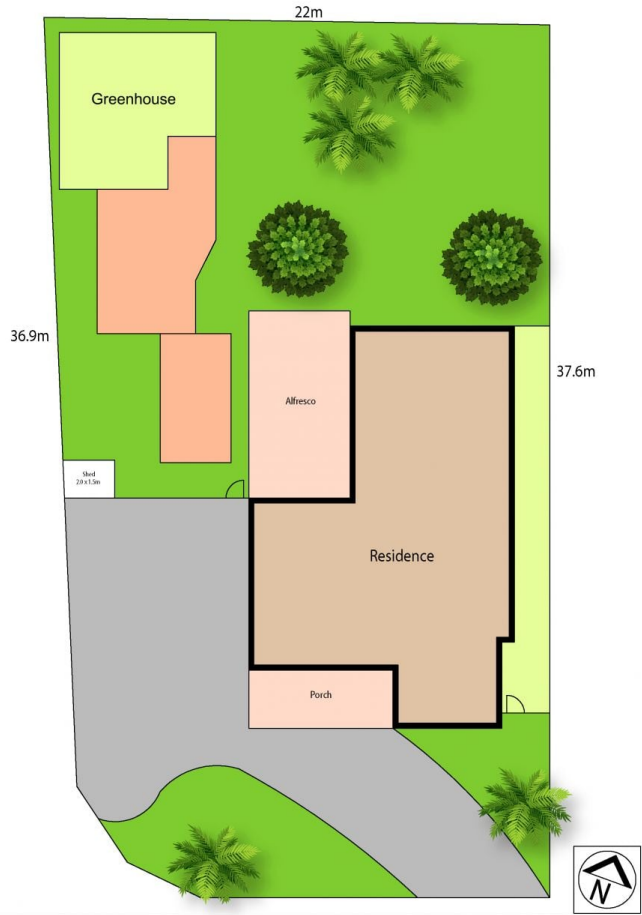
**Peter Colella**  
0421 346 326



**Monique Cukavac**  
0449 624 617



Scale in metres. Indicative only. Dimensions are approximate. All information contained herein is gathered from sources we believe to be reliable. However we cannot guarantee its accuracy and interested persons should rely on their own enquiries.



# 12 Inkeeper Pl, Sydenham