



66 Jade Way Hillside VIC

4 🏠 2 🚗 2 🚗

Perfectly positioned and a whole lot to offer..

This well accommodating double storey home is perfectly positioned & well maintained in an ideal location. Maximising style, comfort and elegance, the ground floor features a study, formal living and dining rooms, well appointed kitchen, a light-filled family room overlooking the magnificent outdoor entertainment area. Upstairs comprises 4 fitted bedrooms, master with WIR and ensuite & central bathroom. Additional features include gas ducted heating, evaporative cooling, roller shutters and a double remote garage with internal access all on some 349m² of land. Located within close proximity to shopping centres, schools, childcares, transport and parks!

Price : \$ 700,000
Land Size : 349 sqm
View : <https://www.ypa.com.au/7391842>

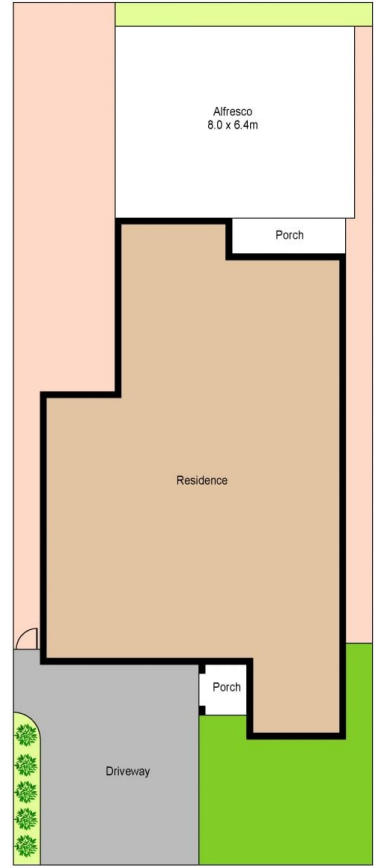
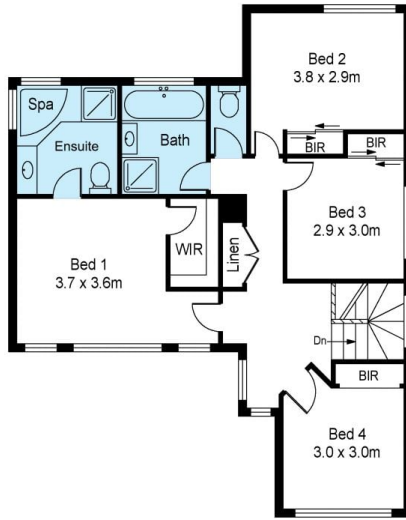
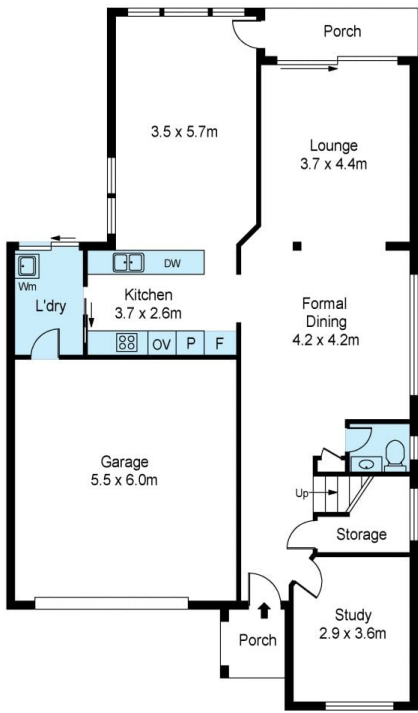


Peter Colella
0421 346 326



Monique Cukavac
0449 624 617

Appointments are conducted in accordance with the latest government guidelines. We appreciate your cooperation.



0 1 2 3 4 5

Scale in metres. Indicative only. Dimensions are approximate. All information contained herein is gathered from sources we believe to be reliable. However we cannot guarantee its accuracy and interested persons should rely on their own enquiries

66 Jade Way, Hillside