

10 President Road ALBANVALE VIC

3  1  1 

This elevated BV home highlight with solid timber floors offers three spacious bedrooms, master with built-in robes, separate lounge room, well-appointed kitchen with brand new appliances and adjoining dining area, central bathroom plus 2 separate toilets & bidet. Features include; gas ducted heating, split system cooling, oversized garage, ample off-street parking, large backyard all on some 545m2(approx) of land.

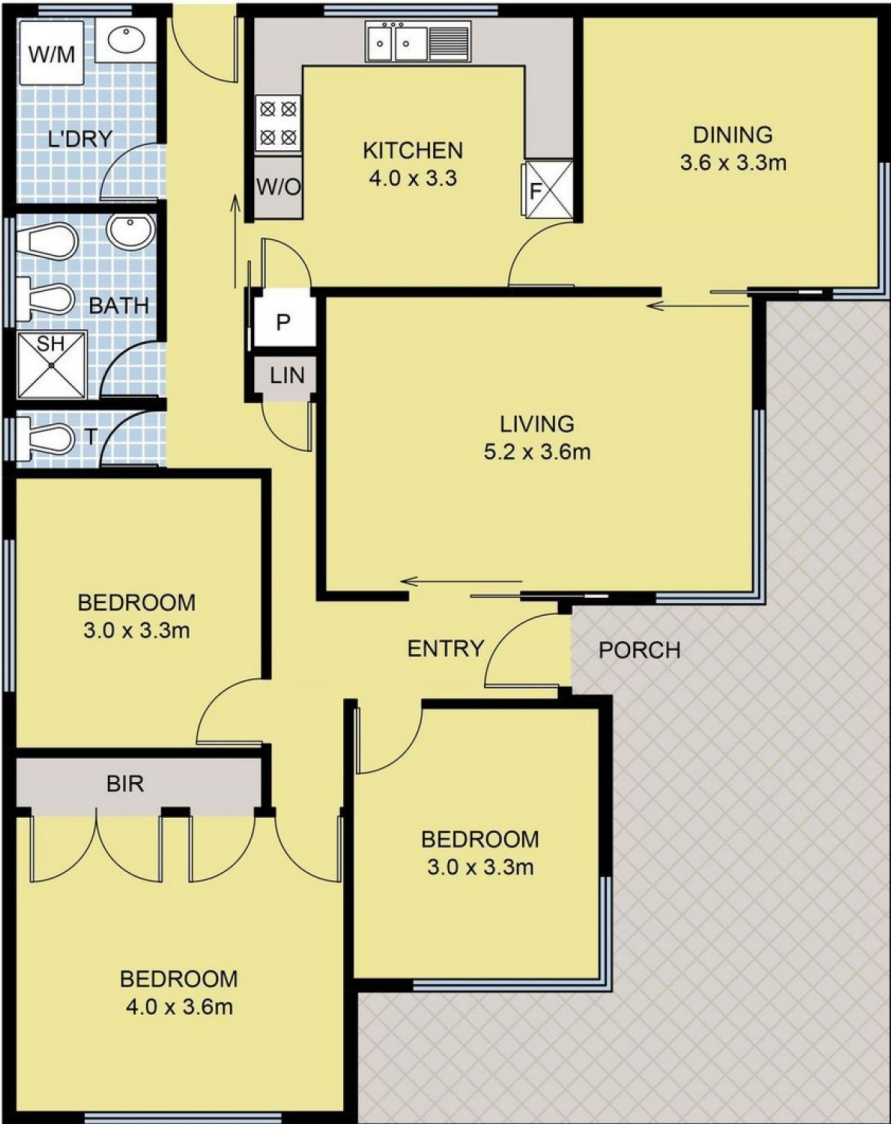
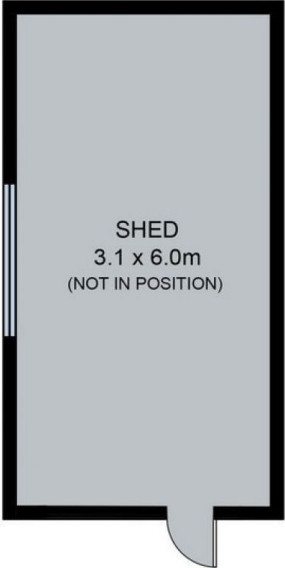
Positioned just minutes from nearby schools, Brimbank Shopping Centre, bus services and recreational facilities this home is truly too good to miss!

Call us now to register your interest for an inspection!

Land Size : 545 sqm
View : <https://www.ypa.com.au/7391533>



Peter Colella
0421 346 326



10 President Road, Albanvale

DISCLAIMER: Floor plan is for marketing purposes and is to be used as a guide only. Measurements are approximate and for illustrative purposes. Interested parties should make and rely on their own enquiries or refer to contract drawings for more accurate information.