



187 Copernicus Way KEILOR DOWNS VIC

5 4 3

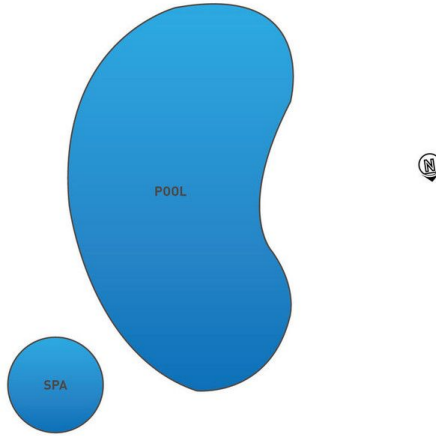
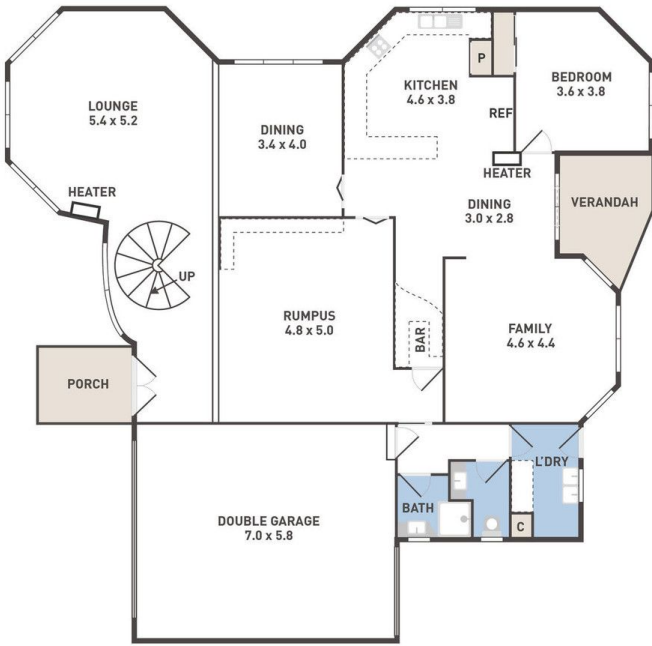
This superbly constructed double storey home stands proud in one of Keilor Downs most popular areas, close to Watergardens Shopping Centre, public transport and leading schools.

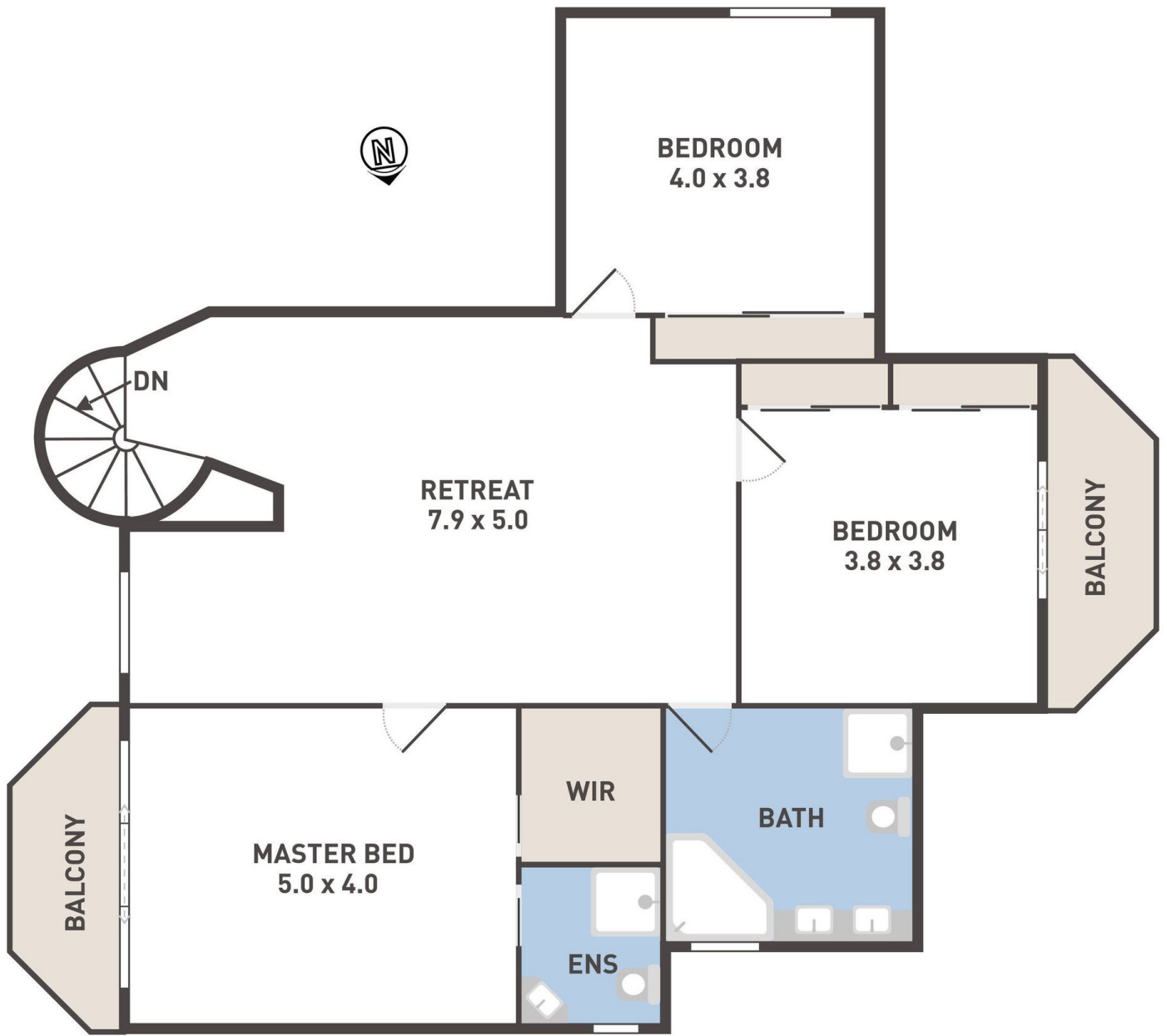
View : <https://www.ypa.com.au/7391519>

- *East facing property.
- *Horseshoe driveway with an abundance of off-street parking.
- *Comprising 4 spacious bedrooms & 3 bathrooms.
- *Huge master suite with ensuite, walk in robe & balcony.
- *Generous front formal lounge with wood fireplace complemented with a spiral staircase.
- *Spacious upstairs retreat.
- *Large kitchen with quality appliances & abundance of bench space and storage.
- *Adjoining meals & dining areas plus large family area with separate rumpus.



Peter Colella
0421 346 326





FIRST FLOOR