



## 29 Amberlea Circuit TAYLORS HILL VIC

3  2  2 

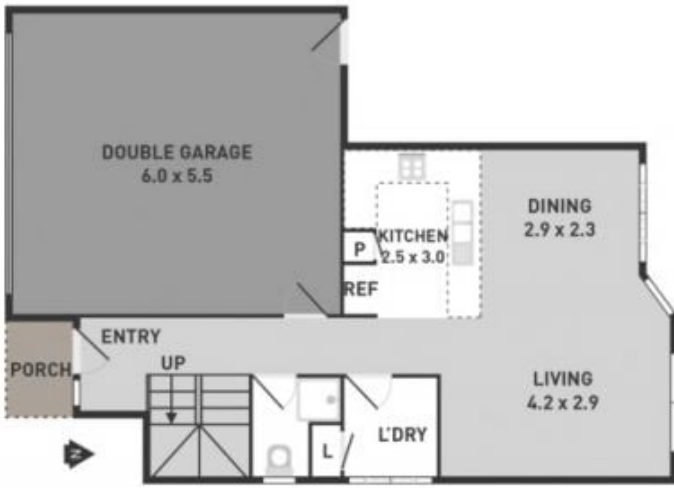
A sensational townhouse that will surely impress. Whether it's a low maintenance home or an investment opportunity you're after; all bases are covered. Three large bedrooms, master with ensuite & central bathroom upstairs. Ground floor offers a well serviced kitchen complete with stainless steel appliances including dishwasher overlooking the meals & lounge area stepping out to a rear yard. Other features include gas ducted heating, split system air conditioner, double remote garage with internal access all on some 254m<sup>2</sup> (approx) of land. Situated in one of Taylors Hills most sought after pockets, close to schools, transport, parks, major arterial roads and Watervale shopping and entertainment complex.

Leased until 22nd September 2018 for \$1,603 pcm

View : <https://www.ypa.com.au/7391446>



**Peter Colella**  
0421 346 326



GROUND FLOOR



FIRST FLOOR