



29 Canterbury Avenue Sunbury VIC

3 2 2

Nestled in the heart of Canterbury Hills Estate, this family home offers the full package with multiple living areas and all amenities at your fingertips. This is an opportunity you do not want to miss out on, set on a generous block of (approx.) 1,028m². Conveniently located within easy access to the Calder Freeway, schools, and with proximity to walking tracks and parklands including Spavin Drive Lake, makes for a great location!! This is an ideal opportunity for a first home buyer with a growing family or a savvy investor.

Property features include:

- ? 3 Bedrooms, all with built-in robes
- ? Master bedroom with ensuite and walk-in robe
- ? Main central bathroom with separate toilet
- ? Kitchen with ample cupboards and stainless-steel (Gas)

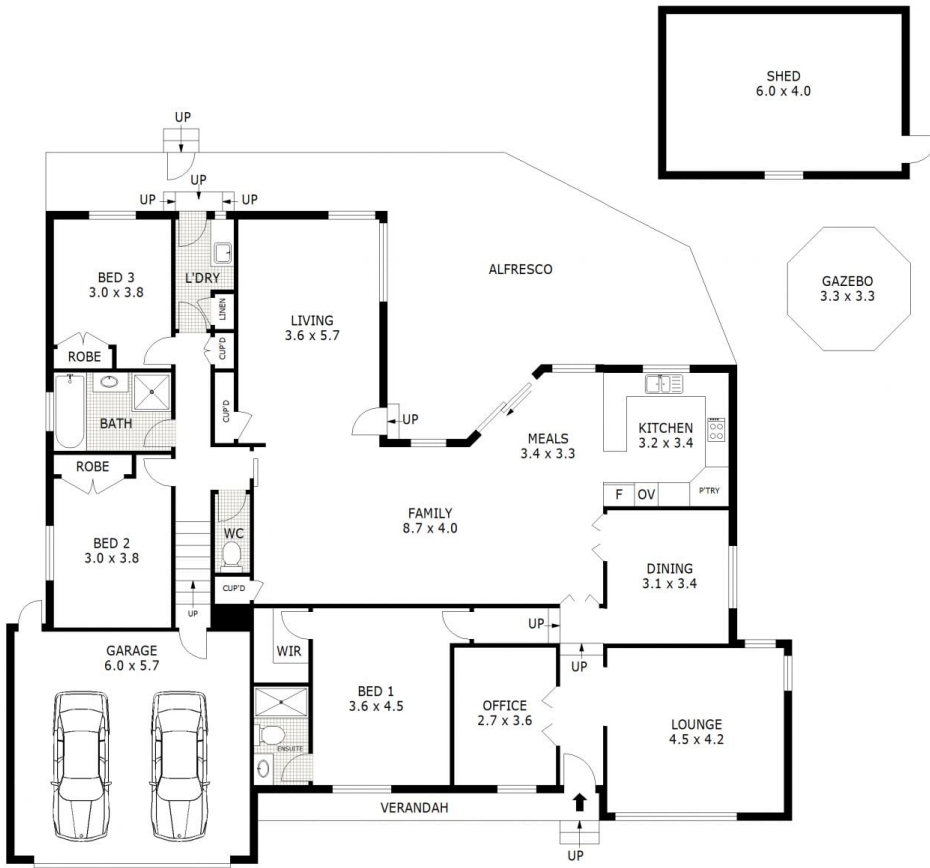
Price : \$ 720,000
Land Size : 1028 sqm
View : <https://www.ypa.com.au/7389134>



Sebastien Kowlessur
0418 644 323



Daniel Scarano
0448 735 298



SITE PLAN

Disclaimer: All images, views and diagrams are indicative only. Dimensions, areas and landscape are indicative and subject to change without notice. Purchasers should check the plans and specifications included in the terms of the contract of sale carefully prior to signing the contract.