



9 Glastonbury Drive Sunbury VIC

4 2 2

Modern and light filled this family home was created with easy living in mind. Perfectly positioned to enjoy the meandering walking trails nearby, this property offers easy maintenance living with an idyllic lifestyle on offer. Situated on a large elevated block of 591m² (approx.) with the convenience of Killara Primary School, Early learning Centre, bus routes, and local shops all within close proximity.

Land Size : 591 sqm
View : <https://www.ypa.com.au/7389127>

The property comprises of:

? Kitchen being the heart of the home boasts fabulous walk-in pantry, breakfast bar and stainless-steel appliances including dishwasher

? Kitchen overlooks a large tiled meals area which opens directly to the covered alfresco, creating the perfect indoor / outdoor flow

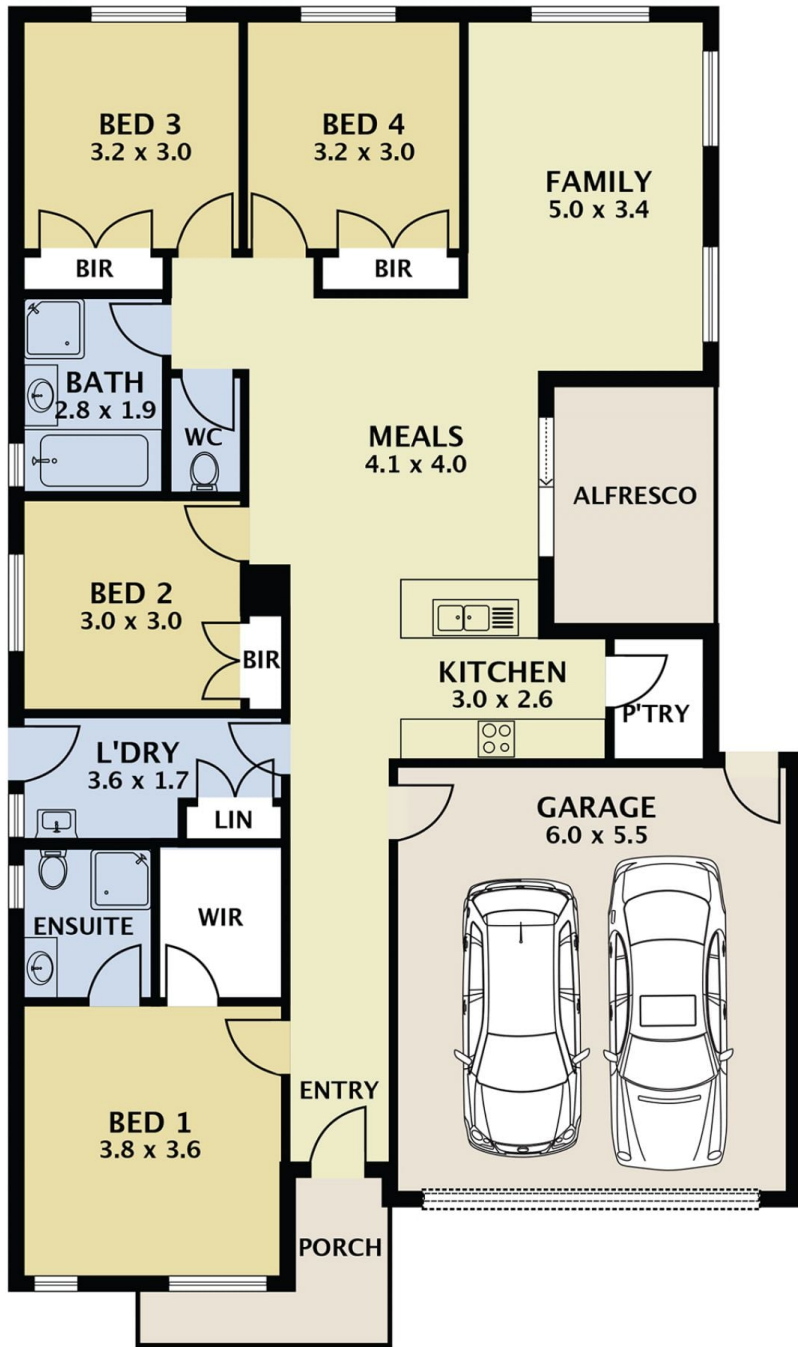
? Spacious adjoining family room enjoys views of the back



Daniel Scarano
0448 735 298



Sebastien Kowlessur
0418 644 323



9 Glastonbury Drive Sunbury

DISCLAIMER

PLANS SHOWN ARE FOR MARKETING PURPOSES ONLY, ALL DIMENSIONS ARE APPROXIMATE AND NOT TO SCALE. THEY ARE SUBJECT TO ERRORS AND INACCURACIES AND NO LIABILITY WILL BE ACCEPTED. INTERESTED PARTIES SHOULD MAKE THEIR OWN INQUIRIES.