



## 15/42 Mitchells Lane Sunbury VIC

2 1 1

Whether you're a first home buyer, downsizer or investor looking to add to your portfolio you do not want to miss this opportunity!

Situated in a booming location which is right near schools, childcare, sporting facilities, the Aldi shopping complex, public transport, freeway access and so much more! Low maintenance, modern, neat and tidy, with nothing to be done this unit offers unbelievable value.

**Price** : \$ 410,000

**View** : <https://www.ypa.com.au/7389105>

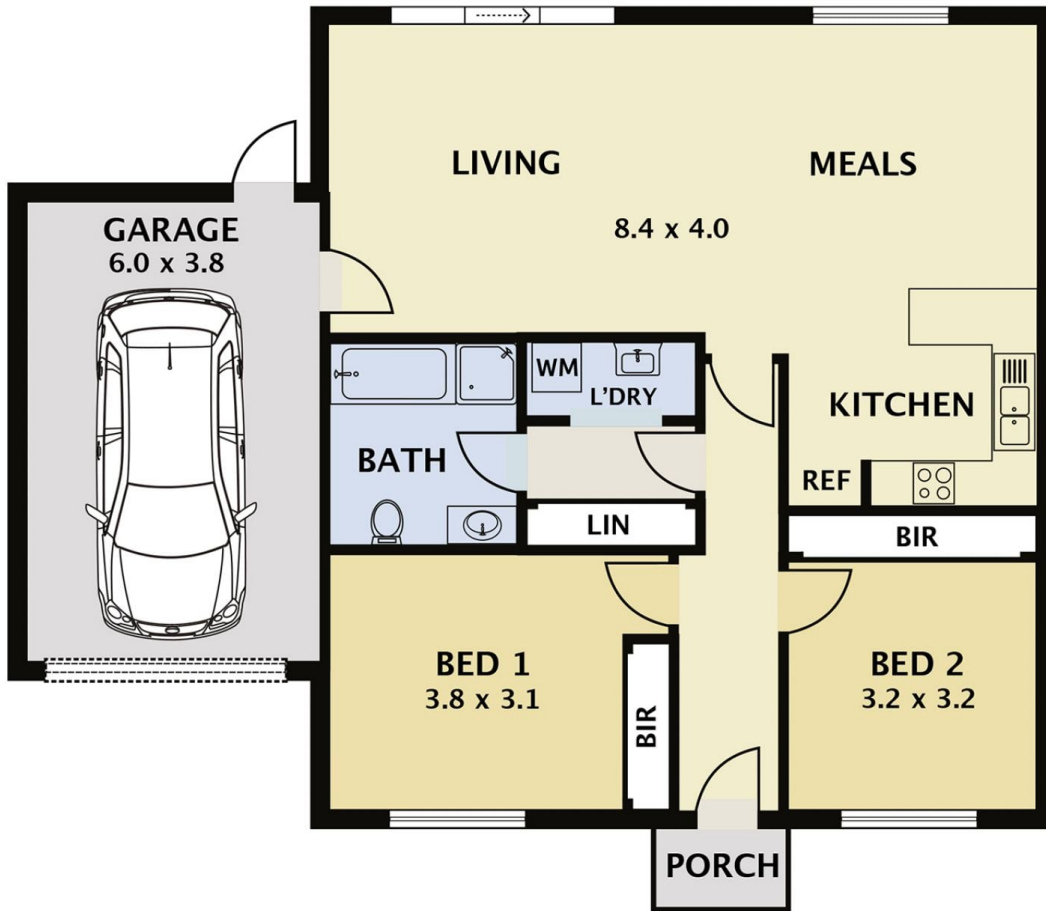
Property features include;

? 2 nice sized bedrooms, both with built-in robes

? Main central bathroom

? Modern U-Shaped kitchen with breakfast bar, ample cupboards and stainless-steel appliances including gas cooktop, under bench oven and dishwasher

? Open plan dining and living overlooking the rear courtyard



## 15/42 Mitchells Lane Sunbury

**DISCLAIMER**

PLANS SHOWN ARE FOR MARKETING PURPOSES ONLY. ALL DIMENSIONS ARE APPROXIMATE AND NOT TO SCALE. THEY ARE SUBJECT TO ERRORS AND INACCURACIES AND NO LIABILITY WILL BE ACCEPTED. INTERESTED PARTIES SHOULD MAKE THEIR OWN INQUIRIES.