

10 Greenhill Court Sunbury VIC

4  2  2 

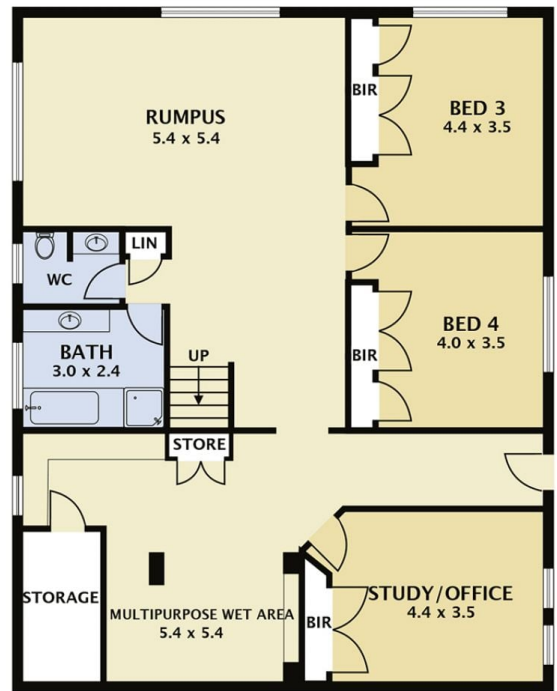
It quickly becomes apparent the moment you enter the light filled foyer, that every part of this home is top class and no expense has been spared. A home that is larger than life, enriched with so much beauty and elegance the expansive living spaces are spread over two levels and offer a flexible floorplan that could easily accommodate multigenerational families or give teenagers their independence as required. Set in the prestigious Green Gables Estate on an incredible 714m² (approx..) block, this home offers a quality and uniqueness that cannot be replicated. This expansive, ultra-modern family home offers a distinctive décor reflecting a hint of industrial appeal and a touch of timber which adds an inviting warmth and ambiance.

Price : \$ 1,050,000

Land Size : 714 sqm

View : <https://www.ypa.com.au/7389102>

With living areas, wet areas and bedrooms on each level and each with their own access, this property is certainly expansive, the property features include:



10 Greenhill Court Sunbury

DISCLAIMER

PLANS SHOWN ARE FOR MARKETING PURPOSES ONLY, ALL DIMENSIONS ARE APPROXIMATE AND NOT TO SCALE. THEY ARE SUBJECT TO ERRORS AND INACCURACIES AND NO LIABILITY WILL BE ACCEPTED. INTERESTED PARTIES SHOULD MAKE THEIR OWN INQUIRIES.