



## 11 Turner Court Sunbury VIC

3 2 2

Tucked away in a quiet court location, on a block size of approximately 860m<sup>2</sup>. This family home offers an exceptional layout to provide an amazing lifestyle for the next owners. Prominently positioned within walking distance to Kismet primary school, parklands, and public transport!

**Price** : \$ 650,000  
**Land Size** : 860 sqm  
**View** : <https://www.ypa.com.au/7389092>

Property features include:

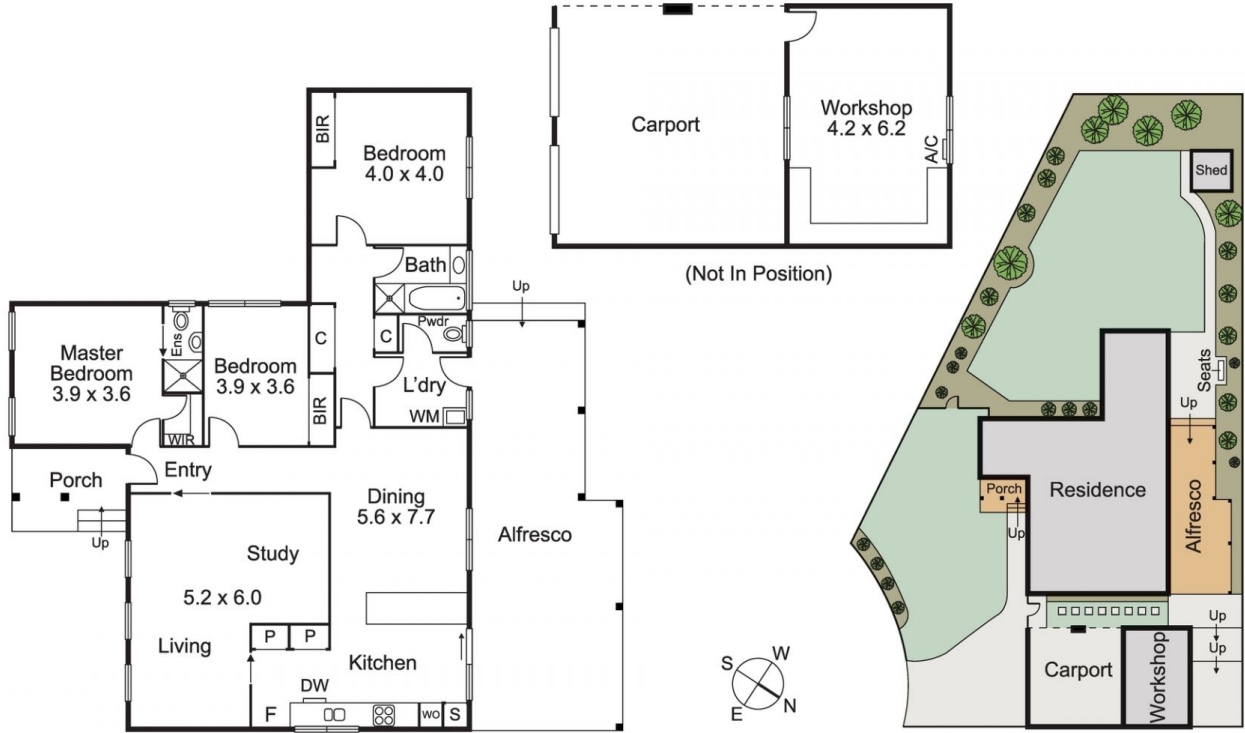
- ? 3 Bedrooms, all with built-in robe
- ? Master bedrooms with walk-in robe and ensuite
- ? Main central bathroom
- ? Kitchen with ample cupboards and stainless-steel appliances (Gas cooktop, oven, rangehood and dishwasher)
- ? Adjoining dining area
- ? L shaped lounge room



**Patrick Kilkeny**  
0401 175 248



**Daniel Scarano**  
0448 735 298



Disclaimer: All images, views and diagrams are indicative only. Dimensions, areas and landscape are indicative and subject to change without notice. Purchasers should check the plans and specifications included in the terms of the contract of sale carefully prior to signing the contract.