



## 8 Semillon Court Sunbury VIC

4 2 5

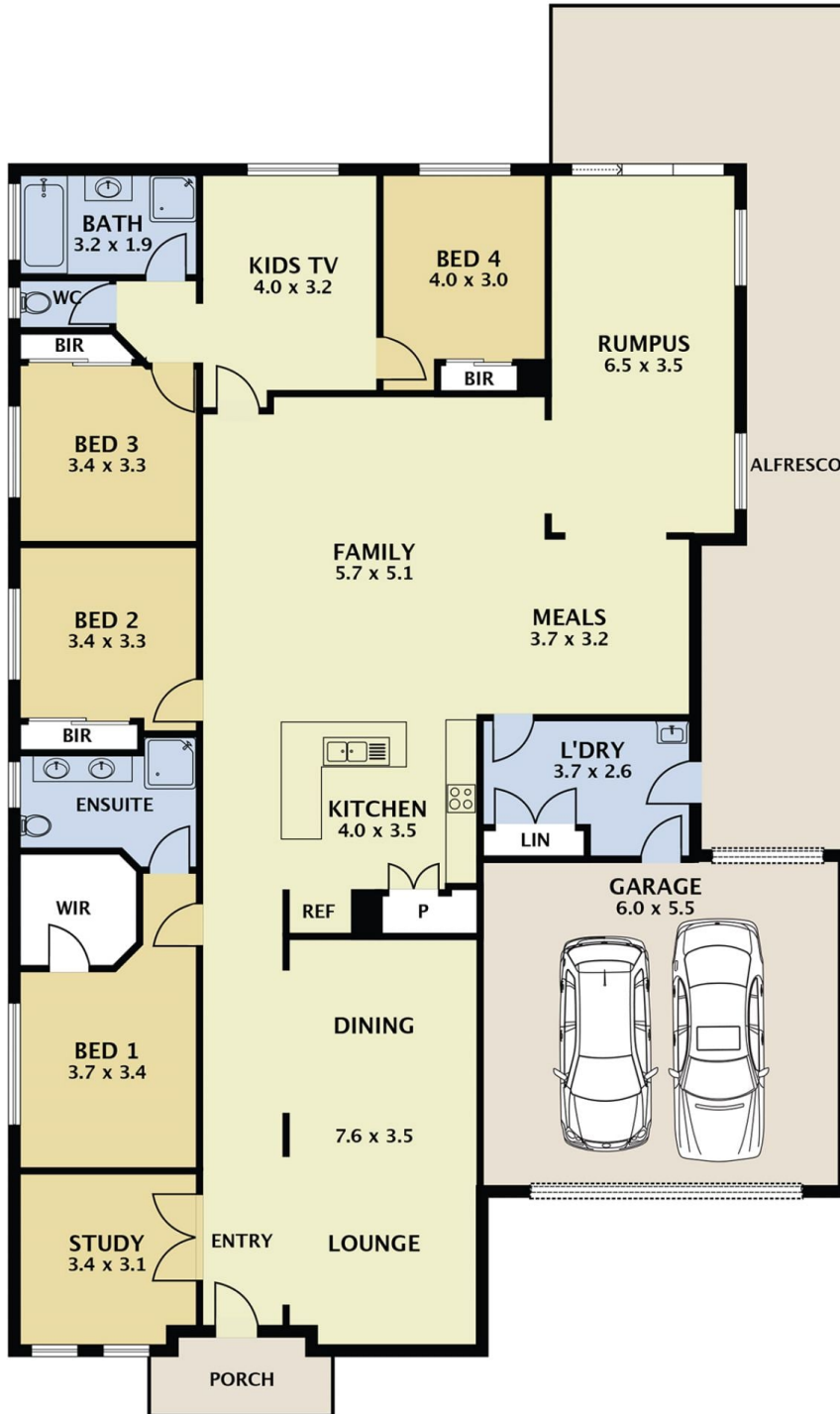
Boasting oodles of space internally, exceptionally well located in a quiet court location, on a terrific sized flat block of land, you simply can't look past this stunning home for a brilliant lifestyle opportunity. Showcasing generous proportions throughout including formal, informal, kids AND shared living spaces, there's enough room for the family to spread out and enjoy. With a terrific pergola, side access for additional vehicle or trailer storage plus plenty of room for kids and pets to run and play. Surrounded by other quality established homes within easy access to Melbourne Airport & the Tullamarine Freeway and a plethora of new facilities being introduced by surrounding new estates you can enjoy the benefits whilst capitalising on the benefits of this leafy, spacious and established location. This family home comprises of;

**Price** : \$ 845,000  
**Building Size** : 32 sqm  
**Land Size** : 875 sqm  
**View** : <https://www.ypa.com.au/7389060>



**Daniel Scarano**  
0448 735 298

? Open plan kitchen, meals and family area being the



## 8 Semillon Court Sunbury

DISCLAIMER  
 PLANS SHOWN ARE FOR MARKETING PURPOSES ONLY. ALL DIMENSIONS ARE APPROXIMATE AND NOT TO SCALE. THEY ARE SUBJECT TO ERRORS AND INACCURACIES AND NO LIABILITY WILL BE ACCEPTED. INTERESTED PARTIES SHOULD MAKE THEIR OWN INQUIRIES.