



23 Muirfield Drive Sunbury VIC

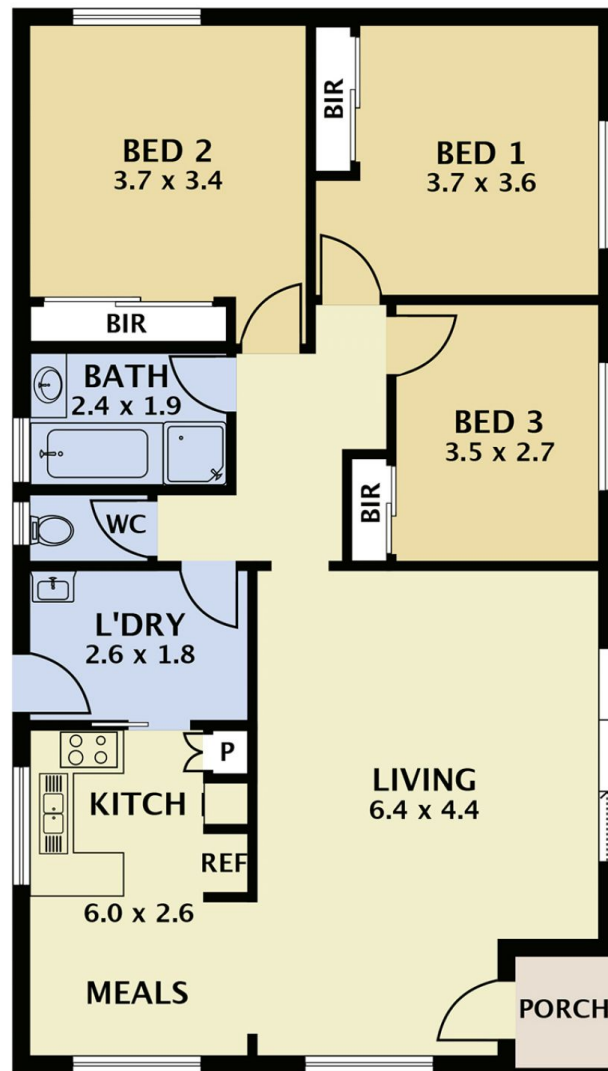
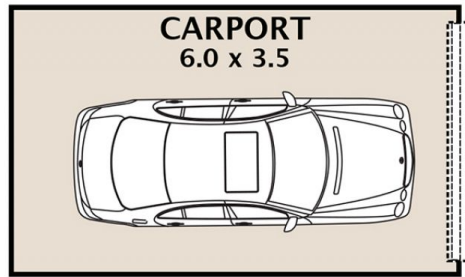
3  1  1 

Situated on a low maintenance block size of 304m² approx., this property presents the perfect entry level opportunity for first home buyers or anyone wishing to downsize. Situated within Goonawarra, Sunbury's Golf Course Estate this home is positioned not only adjacent a park but within walking distance of Primary School, child care facilities, doctors and shops along with the impeccable Goonawarra Golf Course. Surprisingly spacious and with large room sizes to note.

Price : \$ 445,000
Land Size : 304 sqm
View : <https://www.ypa.com.au/7389039>

Key property features:

- ? Three large bedrooms all with built-in robes
- ? Spacious living area with split system, gas furnace heating and direct outdoor access
- ? Kitchen with gas cooktop with range hood and a gas oven.
- ? Main central bathroom with separate toilet



23 Muirfield Drive Sunbury

DISCLAIMER

PLANS SHOWN ARE FOR MARKETING PURPOSES ONLY, ALL DIMENSIONS ARE APPROXIMATE AND NOT TO SCALE. THEY ARE SUBJECT TO ERRORS AND INACCURACIES AND NO LIABILITY WILL BE ACCEPTED. INTERESTED PARTIES SHOULD MAKE THEIR OWN INQUIRIES.